

SP DX Contest 2011

Final Results

Revision 1.2

Information:

Version	Date of Publishing	Information
1.0	2011-10-02	First version
1.1	2011-10-10	Correction of the results of divisions of the Polish Amateur Radio Union
1.2	2011-10-13	Correction of the results after information from YO3CZW who sent the log but his score was missing in the final results.

TABLE OF CONTENTS:

TABLE OF CONTENTS:	2
FOREWORD	4
TROPHIES: WINNERS AND DONORS	5
SPECIAL AWARDS: WINNERS AND DONORS	6
FINAL RESULTS (SORTED BY PREFIXES) WITHOUT POLAND.....	7
FINAL RESULTS – SO AB MIXED QRP – CONTINENTAL CLASSIFICATION (WITHOUT POLAND)	19
FINAL RESULTS – POLAND	20
OPERATORS OF MOAB MIXED STATIONS:	25
OPERATORS OF CONTEST AND SPECIAL EVENT STATIONS:.....	26
CHECKLOGS:	26
WSPÓŁZAWODNICTWO ODDZIAŁÓW TERENOWYCH PZK (POLISH STATIONS ONLY):.....	27
ZNAKI UCZESTNIKÓW ZAWODÓW Z PIĘCIU NAJAKTYWNIJSZYCH ODDZIAŁÓW:.....	28
STATISTICAL DATA.....	29
NUMBER OF PARTICIPANTS BY YEARS	29
NUMBER OF PARTICIPANTS BY YEARS (WITHOUT POLAND)	29
NUMBER OF PARTICIPANTS BY YEARS – POLISH STATIONS ONLY	29
NUMBER OF PARTICIPANTS BY YEARS: SP AND NON-SP STATIONS. COMPARISON	30
NUMBER OF DXCC/WAE ENTITIES REPRESENTED IN THE SP DX CONTEST BY YEARS	30
NUMBER OF PARTICIPANTS BY CONTINENTS (YEARS 1997 – 2011)	31
CONTINENTAL RECORDS.....	32
AFRICA	32
ANTARCTICA	32
ASIA	32
EUROPE (WITHOUT POLAND).....	34
NORTH AMERICA	36
OCEANIA	37
SOUTH AMERICA.....	38
POLAND	39
SP DX CONTEST - RULES.....	42
A MAP OF POLAND WITH BORDERS OF VOIVODESHIPS (PROVINCES):	43

FOREWORD

The SP DX Contest of 2011 was in many ways exceptional. First, anyone who was on the air during the first weekend of April 2011 could experience it - the solar activity was high and the propagation on HF bands was favourable after a long, dry period.

Secondly, the number of submitted logs passed the 2000 mark for the first time in the history of SP DX Contest. The history of our competition is long, as the first event took place in 1933.

Thirdly, even though it is hard to compare figures in Amateur Radio contests in general, many new scores were added to the all-time-high chart, which you can find at the end of this booklet (or document).

The statistics and figures confirm that our contest is gaining in popularity. Some of the reasons are certainly such as: improving participation from Poland, better and faster work of the Contest Committee, increasing number of awards and our informative web site. The contest receives good support from the national organization PZK, and the SP DX Club.

The exact number of handled logs in year 2011 was 2037 from 78 different DXCC/WAE entities. The real number of stations active in the contest was greater, as many casual participants do not submit their logs.

Considering the number of licensees in Poland, the antenna restrictions imposed in recent years, the overall level of man-made electrical noise and other obstacles, the activity from Poland in SP DX Contest is enviably high. This, in turn,

generates higher activity from other countries. We hope that this trend will continue.

The following pages are a mine of information. Apart from the detailed results of 2011 edition of SP DX Contest, there are graphs and tables showing participation and continental record holders. The compilation of results includes scores only since 1997 because the contest rules and the number of Polish multipliers changed then.

If it is not enough, there is more information on our web site <http://www.spdxcontest.info/>, including a searchable data base. Any comments, queries, corrections and questions can be forwarded to the Contest Committee at contest_questions@spdxcontest.info

Thank you for taking part in SP DX Contest 2011 and submitting your log. We give a big hand to the sponsors of contest trophies.

Finally, please accept our cordial invitation to join us in SP DX Contest 2012, which will take place on the first full weekend of April, viz. 7 - 8 April 2012.

SP DX Contest Committee
SP7DQR, SP5UAF, SP5JXK

SP DX Contest rules are available in many languages on the contest website <http://www.spdxcontest.info/>. Our sincere thanks for translation go to: DF4ZL, DJ0IF, F5PBL, I2UIY, JA4FM, K1CC, LA7MFA, OK5NN, ON4MGY, US5WDX, SP2B, SP2BMW, SP2SWR, SQ2BN and SP5HNK.

We would also like to thank Henryk SM0JHF for his help in preparing this publication and Bogdan SP3RBR for the review of the first version of the results and finding some important errors.

TROPHIES: WINNERS AND DONORS

Donated score/category	Winner	Donor
Africa. Top Score regardless of category	EA8AVK	SP8LBK
Asia. SO MIXED multiband categories (regardless of power used)	9K2HN	Polish Amateur Radio Union
Asia. SOAB CW HP	RT9A	SP5IXI/VK6DXI/9M8DX
Asia. SOAB CW LP	RT9S	SP9PT
Asia. SOAB MIXED QRP	RA9MU	SP2JMR
Asiatic Russia. SOAB PHONE (regardless of power used)	RO9O	SP2JMR
Australia/Oceania. SO (Single Operator categories)	YB3XM	SP6T
Baltics (LY, YL, ES). Top Single OP Score regardless of a category	ES5GP	SQ6NEJ
British-Irish Isles. Top Single OP Score regardless of a category	G0DVJ	Team SN0HQ
DACHL countries (DL, HB9, HB0, OE). Top Single OP Score regardless of a category	DF1IAQ	SP5ES
Europe (outside SP). MOAB MIXED	RN3F	SN2K/SP2YWL
Europe (outside SP). SO 40M PHONE	DJ0IF	SQ3LVO/SN3S
Europe (outside SP). SOAB CW HP	RT3T	SP2DX
Europe (outside SP). SOAB CW LP	UA4FCO	SP5UAF/SN5M
Europe (outside SP). SOAB MIXED HP	RK3M	SP DX Club
Europe (outside SP). SOAB MIXED LP	UU2CW	SP DX Club
Europe (outside SP). SOAB PHONE (regardless of power used)	UR5GDX	SQ1EIX
Europe. SOTB MIXED	LY7M	SN3R/SP3KEY Club Team
France. Top Single OP Score regardless of a category	F8DRE	SP9UJR
Japan. Top Score regardless of a category	JH4UYB	SP5WA
North America. SO 40M CW	K3TW/4	SP3SLA/SN3X
North America. SOAB CW (regardless of power used)	K1GQ	SP2JMB
North America. SOAB MIXED (regardless of power used)	VE9ML	SP1NY
North America. SOAB PHONE (regardless of power used)	KU1T	SO6X/SP6IXF
North America. SOTB MIXED	VA3PL	OT26 (Torun) District of the PZK
Poland. MOAB MIXED	SN3R	VK3CTN/SP1CTN
Poland. SOAB CW HP	SO6T	SP5LM
Poland. SOAB CW LP	SN7Q	OT73 (Warsaw) District of the PZK
Poland. SOAB MIXED HP	SO6I	OT73 (Warsaw) District of the PZK
Poland. SOAB MIXED LP	SQ9UM	OT73 (Warsaw) District of the PZK
Poland. SOAB PHONE HP	SP6IXF	SP9UML/SO9L
Poland. SOAB PHONE LP	SP9AQF	SP5LM
Poland. SOTB MIXED	SN8R	Polish Amateur Radio Union
Poland. SWL MIXED	SP-0142-JG	SQ8MXS and Egzaminkf.pl Service
Russia. SO 40M CW	RA9AP	SP3SLA/SN3X
Scandinavia. Top Single OP Score All Band regardless of a category	OH1B	SP5LM
South America. SOAB CW (regardless of power used)	PY5/SQ7NSN	SP7CVW
Ukraine. Top Single OP All Band Score regardless of a category	UR5GDX	SP5ECC
Ukraine. Top Single OP Single Band Score regardless of a category	UT3SA	SP5WA
World (outside EU). MOAB MIXED	UN8LWF	SO9Q/SP9YDX Club Team
World. Top 160M Score	EU3AR	SP6CZ

SPECIAL AWARDS: WINNERS AND DONORS

Besides trophies we have the following special awards sponsored by our great sponsors:

1000 full-color QSL cards

sponsored by SQ1K and **QSLSHOP.pl** for the top score from Slovakia.
The winner of this award is **OM4DN**.

10 HAM Maps of the World

sponsored by SQ1K and **QSLSHOP.pl** for Polish participants of the contest.
The winners of this award were selected randomly.
Maps go to: SN7A, SP6OJE, SP7MFR, SQ5AAG, SP3OZW, SP9LAS, SP3RAT, SP6BXM, SQ3MZM and SP2LQC.

5x1000 single-color QSO cards

sponsored by SP5ADX and **coolQSL.com**.
The winners of this award were selected randomly from all contest participants.
QSL cards go to: DL1LOD, RO3P, SQ9JXN, SP7JKX and YL1XN.

Congratulations to all winners of special awards and great thanks to the sponsors. Please visit their websites! They print really great quality QSL cards and offer other printing services.

FINAL RESULTS (SORTED BY PREFIXES) WITHOUT POLAND

Stations marked with a bold font are award winners. Columns: place, call, number of QSOs, QSO points, multiplier, final score

4K: AZERBAIJAN

SO 15M CW
1 4K9W 108 324 16 5 184

4O: MONTENEGRO

SO 80M CW
1 4O3A 130 390 16 6 240

4X: ISRAEL

SO 15M PHONE
1 4X0A 231 693 16 11 088
SO 80M CW
1 4Z8SM 38 114 15 1 710
SO AB CW LP
1 4Z5TK 243 729 52 37 908

5B: CYPRUS

SO AB PHONE HP
1 5B4AIF 842 2526 75 189 450
SO AB MIXED LP
1 5B/US7IDX 384 1152 66 76 032

6W: SENEGAL

SO AB PHONE LP
1 6W7RV 13 39 10 390

9A: CROATIA

SWL MIXED
1 9A4KJ 27 81 17 1 377
SO 20M PHONE
1 9A4MF 1 3 1 3
SO 40M CW
1 9A3XV 105 315 16 5 040
2 9A7R 61 183 16 2 928
SO 40M PHONE
1 9A1BM 97 291 16 4 656
2 9A7KDT 47 141 14 1 974
SO 80M CW
1 9A8W 35 105 14 1 470
SO AB PHONE LP
1 9A6IND 112 336 30 10 080
2 9A1SZ 62 186 22 4 092
3 9A1DL 25 75 12 900
SO TB MIXED
1 9A3B 632 1896 46 87 216
160M 80M 40M
2 9A5SM 230 690 16 11 040
40M

9K: KUWAIT

SO AB MIXED HP
1st 9K2HN 1301 3903 80 312 240

A6: UNITED ARAB EMIRATES

MO AB MIXED
1 A61ZX 44 132 23 3 036

BV: TAIWAN

SO AB PHONE LP
1 BU2AU 21 63 13 819

CO: CUBA

SO AB CW LP
1 CO8ZZ 13 39 10 390

CN: MOROCCO

SO AB PHONE LP
1 CN8YE 81 243 30 7 290
SO AB CW LP
1 CN8YR 122 366 40 14 640

CT: PORTUGAL

SO 20M PHONE
1 CT1DZY 22 66 10 660
SO 80M CW
1 CR5BWW 32 96 12 1 152
SO AB PHONE LP
1 CT1CQK 315 945 46 43 470
2 CT2GSN 269 807 42 33 894
SO AB PHONE HP
1 CT2JBG 102 306 40 12 240

CT9: MADEIRA IS.

SO 10M CW
1 CT9/DL3KWF 53 159 13 2 067
SO AB CW LP
1 CT9/DL3KWR 157 471 30 14 130

DL: GERMANY

SO 20M CW
1 DM3F 47 141 15 2 115
2 DL9ABM 11 33 7 231
SO 40M CW
1 DL/SP2SWA 120 345 16 5 520
2 DL1CW 108 324 16 5 184
3 DL7URH 105 315 16 5 040
4 DH2URF 87 261 16 4 176
5 DL4JYT 77 231 16 3 696
6 DL7ET 63 189 15 2 835
7 DJ6TK 60 180 15 2 700
8 DL1THB 56 165 16 2 640
9 DL2ZA 50 150 15 2 250
10 DL5AWI 47 141 14 1 974
11 DL4OCE 45 135 14 1 890
12 DK3PM 36 108 15 1 620
13 DK5ZX 37 111 14 1 554
14 DL5CD 39 117 13 1 521
15 DK2FG 34 102 14 1 428
16 DL1HBL 22 66 12 792
17 DL7YS 15 45 11 495
18 DH5MM 10 30 8 240
19 DK9MH 10 30 7 210
SO 40M PHONE
1 DJ0IF 308 921 16 14 736
2 DL2SAX 188 564 16 9 024
3 DJ0MCZ 171 513 16 8 208
4 DM4DX 127 381 16 6 096
5 DL/SP4NKJ_M 76 228 14 3 192
6 DL4LAX 57 171 14 2 394
7 DJ3DM 40 120 14 1 680
8 DG1LS 32 96 13 1 248
9 DL9ZWG 25 75 10 750
10 DL1DF 23 69 9 621
11 DG7HL 11 33 8 264
12 DM2RM 9 27 7 189
SO 80M CW
1 DL7VAF 98 294 16 4 704
2 DK5IM 97 291 16 4 656
3 DJ9DZ 86 258 16 4 128
4 DK0SU 20 60 12 720
SO 80M PHONE
1 DL1BRD 42 126 15 1 890
2 DO5TMM 17 51 9 459
SO 160M CW
1 DL2OM 23 69 13 897
2 DL1HSI 7 21 4 84
SO AB PHONE LP
1 DL9KI 138 414 32 13 248
2 DF2SD 106 318 30 9 540
3 DL5DTG 75 225 32 7 200
4 DL2DUA 59 177 26 4 602
5 DG1DRS 27 81 15 1 215
6 DC2DC 22 66 18 1 188

7	DL7DCL	10	30	9	270
8	DG4HZ	9	27	7	189
9	DO9PL	5	15	3	45
SO AB PHONE HP					
1	DG1EA	255	765	54	41 310
2	DL3OHB	128	384	43	16 512
3	DG1RZD	94	282	26	7 332
4	DH0GDS	91	273	25	6 825
5	DG0CC	50	150	24	3 600
SO AB CW LP					
1	DF4ZL	182	546	56	30 576
2	DL8HK	220	660	45	29 700
3	DL5ARM	184	552	37	20 424
4	DL1ARJ	153	459	36	16 524
5	DL8MAS	143	429	32	13 728
6	DL6UM	134	402	31	12 462
7	DL5KM	128	384	32	12 288
8	DL5YL	106	318	36	11 448
9	DM2RN	118	354	32	11 328
10	DF7JC	96	288	35	10 080
11	DJ3XD	83	249	35	8 715
12	DL7UXG	84	252	33	8 316
13	DL7AXM	84	252	30	7 560
14	DL4VQ	74	222	32	7 104
15	DL2AXM	60	180	38	6 840
16	DF1SZ	81	243	28	6 804
17	DL7JOM	68	204	27	5 508
18	DK7FP	54	162	29	4 698
19	DL2ARG	54	162	28	4 536
20	DK1AX	60	180	22	3 960
21	DK3AX	57	171	23	3 933
22	DL2YCA	69	207	16	3 312
23	DL5JRA	29	87	19	1 653
24	DL7AT	25	75	13	975
25	DL6FBK	10	30	7	210
SO AB CW HP					
1	DL8QS	285	855	77	65 835
2	DK7ZT	145	435	49	21 315
3	DL4ME	93	279	29	8 091
4	DL5AXX	46	135	33	4 455
SO AB MIXED LP					
1	DL1NKS	299	897	50	44 850
2	DK4WF	117	351	47	16 497
3	DF4TD	102	306	18	5 508
4	DL3DXF	40	120	15	1 800
5	DF9YC	23	69	11	759
SO AB MIXED HP					
1	DF1IAQ	473	1419	60	85 140
2	DL1EKO	197	591	45	26 595
SO TB MIXED					
1	DL9AJ	324	972	46	44 712
160M 80M 40M					
2	DL/SQ7AEC	286	858	42	36 036
160M 80M 40M					
3	DK2CK	314	942	36	33 912
80M 40M 20M					
4	DL5YM	271	813	36	29 268
160M 80M 40M					
5	DF2KK	200	600	46	27 600
80M 40M 20M					
6	DL8UAA	206	615	32	19 680
80M 40M					
7	DL8UAT	168	504	36	18 144
80M 40M 20M					
8	DF3TE	114	342	38	12 996
80M 40M 20M					
9	DH1PAL	119	357	35	12 495
80M 40M 20M					
10	DL5DBH	93	279	34	9 486
80M 40M 20M					
11	DG2MEL	109	327	29	9 483
80M 40M 20M					
12	DL4EAX	98	294	31	9 114
160M 80M 40M					
13	DL1LOD	108	324	24	7 776
80M 40M					
14	DG9VH	69	207	23	4 761
40M 20M					

MO AB MIXED						
1	DL0FTL	86	258	31	7 998	
DU: PHILIPPINES						
SO 20M CW						
1	DV1/JO7KMB	8	24	6	144	
SO 20M PHONE						
1	DU1IVT	101	303	16	4 848	
E7: BOSNIA & GERCEGOVINA						
SO 40M CW						
1	E73X	67	201	16	3 216	
2	E75MJ	12	36	9	324	
3	E73MJ	11	33	8	264	
SO 40M PHONE						
1	E74NR	28	84	16	1 344	
SO 80M CW						
1	E77C	114	342	16	5 472	
SO 160M PHONE						
1	E74AA	19	57	11	627	
SO AB CW LP						
1	E73PY	50	150	19	2 850	
SO TB MIXED						
1	E70R	113	339	38	12 882	
80M 40M 20M						
EA: SPAIN						
SO 15M CW						
1	EA7TL	114	342	15	5 130	
SO 15M PHONE						
1	EC7ABV	164	492	16	7 872	
2	EA5CZM	29	87	14	1 218	
SO 20M PHONE						
1	EA2DT	303	909	16	14 544	
2	EA3NA	287	861	16	13 776	
3	EA3GHZ	122	354	14	4 956	
4	EB3DSD	85	255	15	3 825	
5	EB3WH	74	222	15	3 330	
6	EA3GYE	1	3	1	3	
SO 40M PHONE						
1	EA3ELZ	121	363	16	5 808	
SO AB PHONE LP						
1	EA1AJV	301	903	48	43 344	
2	EA3KT	245	735	46	33 810	
3	EA4RCT	109	327	33	10 791	
4	EA2CHL	60	180	26	4 680	
SO AB CW LP						
1	EA5FQ	306	918	47	43 146	
2	EA4BF	127	381	46	17 526	
SO AB CW HP						
1	EA5YU	199	597	44	26 268	
SO AB MIXED LP						
1	EB5GGB	59	177	23	4 071	
2	EA3FHP	10	30	6	180	
EA8: CANARY IS.						
SO AB PHONE LP						
1	EA8CVW	53	159	27	4 293	
SO TB MIXED						
1	EA8AVK	273	819	43	35 217	
20M 15M 10M						
EI: IRELAND						
SO 20M CW						
1	EI4JZ	76	228	15	3 420	
SO 20M PHONE						
1	EI8GXB	121	363	16	5 808	
2	EI6KD	72	216	16	3 456	
3	EI5JQ	58	174	15	2 610	
SO AB PHONE LP						
1	EI6ARB	66	198	18	3 564	
SO AB CW HP						
1	EI7GY	76	228	35	7 980	
SO AB MIXED LP						
1	EI9KC	367	1101	55	60 555	
2	EI5DI	29	87	18	1 566	

SO AB MIXED LP					
1	MM0SGQ	60	180	14	2 520

GU: GUERNSEY & DEPENDIENCES

SO AB CW LP					
1	MU0FAL	111	333	37	12 321

GW: WALES

SO 20M PHONE					
1	MW0FDG	185	555	16	8 880

HA: HUNGARY

SO 40M CW					
1	HA3MU	136	408	16	6 528
2	HA8GY	136	408	16	6 528
3	HG6C	106	318	16	5 088
4	HA6WT	89	267	16	4 272
5	HA5FTL	20	60	13	780

SO 80M CW					
1	HG30LP	152	456	16	7 296
2	HA6PJ	109	327	16	5 232
3	HA7MB	89	267	16	4 272
4	HA5KQ	87	261	16	4 176
5	HA6VA	86	258	16	4 128

SO 160M CW					
1	HA8BE	74	222	15	3 330

SO AB PHONE LP					
1	HA0RZK	21	63	12	756

SO AB CW LP					
1	HA8VK	300	900	66	59 400
2	HA6NW	258	774	49	37 926

SO AB MIXED LP					
1	HA6NL	506	1518	69	104 742
2	HG8C	147	441	28	12 348
3	HA7JQK	41	123	22	2 706

SO TB MIXED					
1st	HA1TI	390	1170	44	51 480

160M 80M 40M

HB: SWITZERLAND

SO 40M CW					
1	HB9CPS	83	249	16	3 984

SO 160M CW					
1	HB9AII	19	57	10	570

SO AB PHONE LP					
1	HB9EGA/P	15	45	14	630

SO AB PHONE HP					
1	HB9AOF	73	219	21	4 599

SO AB MIXED HP					
1	HB9FMU	85	255	31	7 905

HBO: LIECHTENSTEIN

SO AB PHONE HP					
1	HB0/SP7VC	251	753	44	33 132

HK: COLOMBIA

SO AB MIXED HP					
1	HK3Q	124	372	45	16 740

HL: SOUTH KOREA

SO AB PHONE LP					
1	DS2NMJ	9	27	7	189

HS: THAILAND

SO AB CW HP					
1	HS0AC	54	162	23	3 726

SO AB MIXED LP					
1	HS0ZHC	173	519	31	16 089

I: ITALY

SO 20M CW					
1	IK8UND	81	243	16	3 888
2	IK2NUX	52	156	15	2 340
3	IZ2CSX	5	15	5	75

SO 20M PHONE					
1	IW0HLZ	305	915	16	14 640

2	IK7RVY	262	786	16	12 576
3	IZ1QXV	223	669	16	10 704
4	IK7XNF	183	549	16	8 784
5	IZ0UME	28	84	11	924

SO 40M CW					
1	IK2CZQ	29	87	15	1 305

SO 40M PHONE					
1	I6ONE	33	99	11	1 089

SO 80M PHONE					
1	IZ5MOQ	118	354	16	5 664

SO 160M CW					
1	IV3AZV	53	159	14	2 226

SO AB PHONE LP					
1	IZ8ESX	42	126	15	1 890

SO AB CW LP					
1	IK2HDF	301	903	69	62 307
2	I2AZ	60	180	29	5 220
3	IZ5ILV	39	117	27	3 159
4	IK2IKW	15	45	12	540

SO AB CW HP					
1	I3VJW	157	471	44	20 724
2	IK4ZHH	51	153	24	3 672
3	IK3GER	44	132	17	2 244

SO AB MIXED LP					
1	IZ8JFL	272	816	42	34 272
2	IZ5IMD	10	30	9	270

SO AB MIXED HP					
1	IK2SND	117	351	33	11 583
2	IZ3GNG	55	165	33	5 445

SO TB MIXED					
1	IZ0IWC	522	1566	48	75 168

80M 40M 20M

2	IZ0TKF	34	102	17	1 734
---	--------	----	-----	----	-------

40M 20M

IT: SICILY

SO AB CW LP					
1	IT9RZU	274	822	43	35 346

SO AB MIXED HP					
1	IT9WTY	292	876	31	27 156

JA: JAPAN

SWL MIXED					
1	Shigeshi Tanemura	1	3	1	3

SO 15M CW					
1	JA2XYO	93	279	15	4 185
2	JH3AIU	86	258	15	3 870
3	JR3AAZ	83	249	15	3 735
4	JH2RMU	24	72	13	936
5	JP1IXV	11	33	8	264
6	JA2KKA	10	30	7	210
7	JA3RAZ	8	24	6	144
8	JR2AAN/2	5	15	4	60
9	JR2FJC	5	15	4	60
10	JN1BBO	3	9	3	27

SO 15M PHONE					
1	JG2REJ	15	45	8	360
2	JG5UWK	4	12	2	24
3	JF3BFS	3	9	2	18
4	JG1SWV	1	3	1	3

SO 20M CW					
1	JE1RRK	12	36	9	324
2	JK1LUY	8	24	5	120

SO 40M CW					
1	JO1WKO	44	132	15	1 980
2	JR9NVB	13	39	11	429
3	JA3NOJ	5	15	5	75
4	JA4AVO	1	3	1	3

SO 40M PHONE					
1	JA4CSJ	8	24	5	120

SO AB CW LP					
1	JI1ALP	44	132	25	3 300
2	JG3CQJ	40	120	24	2 880
3	JA1CPZ	25	75	14	1 050
4	JF2UPM	20	60	12	720
5	JA1CP	20	60	11	660
6	JA0BJY	10	30	7	210
7	JA2AXB	9	27	7	189

8	JA3JM	7	21	6	126
9	JP1HUJ	5	15	5	75
SO AB CW HP					
1	JA7DLE	190	570	47	26 790
2	JA6BWH	77	231	32	7 392
SO AB MIXED LP					
1	JF1KWG	36	108	12	1 296
SO AB MIXED HP					
1	JH4UYB	308	924	56	51 744
K: UNITED STATES OF AMERICA					
SO 15M CW					
1	NA2X	12	36	6	216
SO 20M CW					
1	AE1T	119	357	16	5 712
2	KR2AA	104	312	16	4 992
3	K3MSB	74	222	16	3 552
4	K0PK	41	123	16	1 968
5	W7IJ	39	117	14	1 638
6	NE8J	9	27	7	189
7	N3NZ	7	21	5	105
SO 20M PHONE					
1	N1IXF	127	381	15	5 715
2	KD3WK	33	99	13	1 287
3	N8WAV	13	39	9	351
4	N4DTF	2	6	2	12
5	NQ3U	2	6	2	12
SO 40M CW					
1	K3TW/4	110	330	16	5 280
2	N4PL	88	264	16	4 224
3	WD5K	5	15	4	60
SO 40M PHONE					
1	K4JRB	11	33	8	264
SO AB PHONE LP					
1	AB2TC	65	195	29	5 655
2	WB3BSA	32	96	14	1 344
3	KE1Q	30	90	14	1 260
4	WA1DRQ	21	63	17	1 071
SO AB PHONE HP					
1	KU1T	325	975	49	47 775
2	KA8Q	91	273	40	10 920
3	AB1BR	18	54	10	540
4	N1BCL	12	36	9	324
SO AB CW LP					
1	K3LU	261	783	54	42 282
2	WA1LWS	92	276	37	10 212
3	N2NC	17	51	14	714
4	K9JWI	17	51	13	663
5	N3KR	13	39	10	390
6	N3UA	6	18	6	108
SO AB CW HP					
1	K1GQ	370	1110	71	78 810
2	AA1V	299	897	69	61 893
3	N3RD	263	789	58	45 762
4	W1FJ	244	732	59	43 188
5	N6AR	212	636	61	38 796
6	N2ED	285	855	43	36 765
7	K1BV	215	645	49	31 605
8	K3ZO	144	432	54	23 328
9	N1IW	155	462	49	22 638
10	W2LE	189	567	32	18 144
11	N3GJ	112	336	40	13 440
12	N4NO	95	285	38	10 830
13	WA1Z	97	291	35	10 185
14	K4DJ	105	315	31	9 765
15	WA3AAN	43	129	20	2 580
16	K2NV	34	102	16	1 632
17	K4BAI	19	57	14	798
18	NB4M	8	24	8	192
SO AB MIXED LP					
1	NK3Y	139	417	36	15 012
2	N1NN	63	189	29	5 481
3	W4UT	36	108	20	2 160
4	K0RC	28	84	14	1 176
5	W1/YO7ARY	29	87	13	1 131
6	W1MSN	14	42	11	462
7	WB0POH	11	33	11	363
8	W8KNO	9	27	8	216

SO AB MIXED HP					
1	K3WW	691	2073	65	134 745
2	NO9E	271	813	56	45 528
3	KG4W	225	675	56	37 800
4	K5KG	220	660	57	37 620
5	N1SNB	89	267	37	9 879
6	NE3H	82	246	32	7 872
7	K8MP	87	261	29	7 569
8	K3JT	90	270	28	7 560
9	W3HDH	25	75	13	975
10	KOPY	21	63	11	693
11	NOBK	6	18	3	54
12	N9OK	1	3	1	3
SO TB MIXED					
1	N3XOF	191	573	38	21 774
40M 20M 15M					
2	KS4X	75	225	30	6 750
40M 20M 15M					
KHO: MARIANA IS.					
SO AB MIXED HP					
1	WHOEWX	6	18	6	108
KP4: PUERTO RICO					
SO AB PHONE LP					
1	WP3DZ	29	87	15	1 305
LA: NORWAY					
SO 20M CW					
1	LA6IHA	59	177	16	2 832
2	LA8OM	57	171	14	2 394
SO 40M CW					
1	LA5FH	79	237	16	3 792
SO AB PHONE LP					
1	LA2GN	53	159	29	4 611
2	LA6NNA	29	87	16	1 392
3	LA3HPA	5	15	3	45
SO AB CW LP					
1	LA8HGA	142	426	41	17 466
2	LA7SI	62	186	35	6 510
SO AB MIXED LP					
1	LA2HFA	223	669	42	28 098
2	LA7RRA	63	189	17	3 213
SO AB MIXED HP					
1	LA2AB	207	621	58	36 018
LU: ARGENTINA					
SO 10M CW					
1	LW2HBF	5	15	4	60
SO AB CW HP					
1	LU8QT	135	405	46	18 630
SO TB MIXED					
1	LW6DW	26	78	20	1 560
20M 15M 10M					
LX: LUXEMBOURG					
SO 20M CW					
1	LX1NO	3	9	3	27
LY: LITHUANIA					
SO 20M PHONE					
1	LY2BKT	5	15	3	45
SO 40M CW					
1	LY9A	75	225	16	3 600
SO 40M PHONE					
1	LY1R	299	897	16	14 352
2	LY2ND	168	504	16	8 064
3	LY2O	102	306	16	4 896
SO 80M CW					
1	LY2MM	106	318	16	5 088
2	LY3BY	88	264	16	4 224
3	LY2TS	80	240	16	3 840
4	LY3NX	75	225	16	3 600
SO 160M CW					
1	LY4BF	19	57	10	570
SO AB PHONE LP					
1	LY1SR	383	1149	45	51 705

2	LY1DJ	98	294	29	8 526
SO AB CW LP					
1	LY3B	383	1149	75	86 175
SO AB CW HP					
1	LY2J	341	1023	73	74 679
SO AB MIXED LP					
1	LY4T	134	402	52	20 904
SO AB MIXED HP					
1	LY2CX	95	285	21	5 985
2	LY5O	102	306	17	5 202
SO TB MIXED					
1	LY7M	664	1992	48	95 616
160M 80M 40M					
2	LY2FN	346	1038	44	45 672
160M 80M 40M					
3	LY3CY	198	594	31	18 414
80M 40M					
4	LY4K	173	519	32	16 608
80M 40M					
5	LY2N	140	420	31	13 020
80M 40M					

LZ: BULGARIA

SO 20M CW					
1	LZ4EP	77	231	16	3 696
SO 20M PHONE					
1	LZ1KP	44	132	10	1 320
SO 40M CW					
1	LZ1FH	114	342	16	5 472
SO 80M PHONE					
1	LZ1DM	104	312	16	4 992
SO AB PHONE LP					
1	LZ2ZY	50	150	24	3 600
2	LZ2AES	2	6	2	12
SO AB CW LP					
1	LZ1GE	165	495	45	22 275
2	LZ1DNY	111	333	29	9 657
3	LZ5XQ	91	273	16	4 368
SO AB CW HP					
1	LZ1DQ	237	711	52	36 972
SO AB MIXED LP					
1	LZ1RN	14	42	10	420
SO TB MIXED					
1	LZ1MC	80	240	25	6 000
40M 20M					
2	LZ1FJ	75	222	26	5 772
40M 20M					
MO AB MIXED					
1	LZ4UU	408	1224	59	72 216

OE: AUSTRIA

SO 40M PHONE					
1	OE6HLF	16	48	11	528
SO AB PHONE LP					
1	OE3DMA	204	612	27	16 524

OH: FINLAND

SO 40M PHONE					
1	OH1TD	73	219	15	3 285
SO 160M CW					
1	OH5NE	42	126	13	1 638
SO AB PHONE HP					
1	OH4BNP	220	660	51	33 660
SO AB CW LP					
1	OH1LWZ	173	519	52	26 988
2	OH8UV	138	414	50	20 700
3	OH5TS	116	348	55	19 140
4	OH3GGQ	82	246	39	9 594
SO AB MIXED HP					
1	OH1B	231	693	53	36 729
2	OH1RX	170	510	16	8 160

OK: CZECH REPUBLIC

SO 15M PHONE					
1	OK2BIQ	14	42	5	210

SO 20M CW					
1	OK2ABU	20	60	13	780
SO 40M CW					
1	OK1FGD	101	303	16	4 848
SO 40M CW					
2	OK1AY	94	282	16	4 512
3	OK2QX	83	249	16	3 984
4	OK5SA	80	240	16	3 840
5	OK3MO	73	219	16	3 504
SO 80M CW					
1	OK7T	127	381	16	6 096
2	OK2HZ	92	276	16	4 416
3	OK2SG	75	225	16	3 600
4	OK2HBY	68	204	16	3 264
5	OK2IU	57	171	15	2 565
6	OK1AOU	33	99	15	1 485
SO 80M PHONE					
1	OK2SSJ	95	285	16	4 560
2	OK2ILD	70	210	16	3 360
SO 160M CW					
1	OK2SMO	65	195	15	2 925
SO 160M PHONE					
1	OK1KZ	15	45	9	405
2	OK2BEN	8	24	6	144
SO AB PHONE LP					
1	OK2BZE	329	987	36	35 532
2	OK1VHV	55	165	28	4 620
3	OK2BRX	56	168	25	4 200
SO AB CW LP					
1	OK1NE	192	576	52	29 952
2	OK2KFK	144	432	36	15 552
3	OK1FCA	141	423	32	13 536
4	OK1FMX	95	285	40	11 400
5	OK2EC	46	138	22	3 036
SO AB CW HP					
1	OK1AYY	74	222	23	5 106
SO AB MIXED LP					
1	OK1IE	242	726	45	32 670
SO AB MIXED HP					
1	OK2EQ	19	57	18	1 026
SO TB MIXED					
1	OK2PTS	289	867	44	38 148
160M 80M 40M					
2	OK2RAC	194	582	42	24 444
160M 80M 40M					
3	OL4M	148	444	44	19 536
80M 40M 20M					
MO AB MIXED					
1	OK2KYC	544	1632	77	125 664

OM: SLOVAK REPUBLIC

SO 40M CW					
1	OM50CDN	104	312	16	4 992
SO 40M PHONE					
1	OM4KK	136	408	16	6 528
SO 80M CW					
1	OM0CS	69	207	16	3 312
SO AB CW LP					
1	OM8LA	196	588	55	32 340
2	OM6AL	105	315	31	9 765
3	OM3BA	96	288	31	8 928
4	OM6MS	90	270	32	8 640
SO AB MIXED LP					
1	OM8TA	95	285	30	8 550
SO TB MIXED					
1	OM4DN	257	771	43	33 153
160M 80M 40M					
2	OM3YCA	220	660	39	25 740
160M 80M 40M					
3	OM4J	154	462	41	18 942
160M 80M 40M					

ON: BELGIUM

SWL MIXED					
1	ONL-4638	210	630	53	33 390
SO 20M CW					
1	OR2F	92	276	16	4 416
SO 20M PHONE					

1	ON5YU	14	42	9	378
2	ON5EU	9	27	7	189
SO 40M CW					
1	OP1A	120	360	16	5 760
SO 40M PHONE					
1	ON4CJU	32	96	11	1 056
SO AB PHONE HP					
1	ON5GQ	354	1062	50	53 100
SO AB CW LP					
1	ON4VMA	241	723	47	33 981
2	ON4ALY	149	447	50	22 350
3	ON3ND	152	456	39	17 784
4	OP5T	94	282	42	11 844
5	ON5WL	82	246	34	8 364
6	ON6LO	84	252	26	6 552
7	ON5JD	46	138	27	3 726
8	ON6PQ	24	72	14	1 008
9	ON7LB	23	69	10	690
SO TB MIXED					
1	OP4A	352	1056	47	49 632
80M 40M 20M					
2	ON1CB	306	918	46	42 228
80M 40M 20M					
3	OP4K	178	534	42	22 428
80M 40M 20M					
4	ON4CAS	171	513	42	21 546
80M 40M 20M					

OZ: DENMARK

SO 40M PHONE					
1	OZ9V	72	216	16	3 456
2	OZ7AEI	45	135	14	1 890
SO 80M CW					
1	OZ4CG	74	222	16	3 552
SO 80M PHONE					
1	OZ1ADL	93	279	16	4 464
SO AB PHONE LP					
1	OZ5HZ	40	120	18	2 160
SO AB CW LP					
1	OZ4FF	161	483	53	25 599
2	OU3A	109	327	38	12 426

PA: THE NETHERLANDS

SWL MIXED					
1	NL6904	73	219	50	10 950
SO 20M CW					
1	PE3HG	25	75	10	750
SO 20M PHONE					
1	PD2R	46	138	13	1 794
2	PDOPIW	23	69	9	621
SO 40M CW					
1	PA2REH	140	420	16	6 720
2	PA0JED	71	213	15	3 195
SO 40M PHONE					
1	PA8KM	106	318	16	5 088
2	PD5LO	17	51	8	408
SO AB PHONE LP					
1	PE1LTY	52	156	28	4 368
2	PD1RP	75	225	19	4 275
3	PD0HM	59	177	19	3 363
4	PA7FRN	46	138	22	3 036
5	PE2KM	48	144	18	2 592
6	PD1B	48	144	15	2 160
7	PA8KW	23	69	16	1 104
8	PD1TV	15	45	11	495
9	PA3RW	14	42	11	462
10	PA3CMF	14	42	7	294
SO AB PHONE HP					
1	PE1LGZ	90	270	37	9 990
SO AB CW LP					
1	PG7V	199	597	56	33 432
2	PA0GRU	103	309	35	10 815
3	PA0MBD	92	276	39	10 764
4	PA0O	73	219	36	7 884
5	PA0CYW	75	225	31	6 975
6	PA0RBA	57	171	26	4 446
7	PA3DRL	56	168	23	3 864
8	PA30ATG	54	162	22	3 564

9	PA2CHM	53	159	22	3 498
10	PA0WLB	52	156	22	3 432
11	PA0QRB	37	111	19	2 109
12	PA3ANN	46	138	14	1 932
SO AB CW HP					
1	PA5WT	263	789	51	40 239
2	PA3AAV	99	297	29	8 613
3	PA0QX	42	126	21	2 646
4	PA0LOU	24	72	13	936
SO AB MIXED LP					
1	PA3GWN	232	696	39	27 144
2	PA3DBS	81	243	36	8 748
3	PA0FAW	50	150	16	2 400
4	PA0B	48	144	16	2 304
5	PD2JAM	47	141	14	1 974
SO TB MIXED					
1	PA4PS	231	693	43	29 799
80M 40M 20M					
2	PA0MIR	149	447	46	20 562
160M 80M 40M					
3	PA0AWH	70	210	34	7 140
80M 40M 20M					
4	PA0WKI	54	162	27	4 374
80M 40M 20M					
5	PA3ARM	47	141	25	3 525
80M 40M 20M					
MO AB MIXED					
1	PG2AA	151	453	38	17 214

PY: BRAZIL

SO 10M CW					
1	PY2WC	95	285	15	4 275
2	PY2XC	6	18	6	108
SO 10M PHONE					
1	PY2ADR	10	30	7	210
SO 15M CW					
1	PY4XX	36	108	13	1 404
2	PY4FQ	15	45	9	405
SO 15M PHONE					
1	PY1SX	28	84	14	1 176
2	PY5/SP7IFX	22	66	11	726
3	PY5FO	12	36	6	216
SO 20M CW					
1	PY7OJ	2	6	2	12
SO 20M PHONE					
1	PY2HL	27	81	8	648
SO 40M PHONE					
1	PY6KY	11	33	7	231
SO AB PHONE HP					
1	PY5/SQ7NSN	306	918	60	55 080
2	PY7VI	37	111	27	2 997
SO AB CW LP					
1	PY7XC	243	729	52	37 908
SO AB CW HP					
1	PY5/SP7ASZ	275	825	52	42 900
2	PP1CZ	92	276	29	8 004
3	PY7GK	25	75	19	1 425
4	PT3A	23	69	12	828
SO AB MIXED HP					
1	PY2MTV	21	63	13	819
SO TB MIXED					
1	PY5/SP8SIW	138	414	38	15 732
20M 15M 10M					
2	PY5ZHP	73	219	26	5 694
20M 15M					
3	PY5/SQ7MHP	5	15	5	75
20M 15M 10M					

S5: SLOVENIA

SO 40M CW					
1	S58MU	106	318	16	5 088
2	S57U	46	138	15	2 070
SO AB PHONE LP					
1	S52WW	12	36	9	324
SO AB CW LP					
1	S52AU	92	276	28	7 728
2	S56A	63	189	30	5 670

MO AB MIXED
 1 S59T 92 276 39 10 764

SM: SWEDEN

SO 20M PHONE
 1 SA3BSY 9 27 5 135

SO 40M CW
 1 SM0Q 68 204 16 3 264
 2 SI0M 50 150 15 2 250
 3 SM6V 27 81 12 972

SO 40M PHONE
 1 SM0YHG 124 372 16 5 952
 2 SI3A 67 201 15 3 015
 3 SD3A 40 120 12 1 440
 4 SM4WKT 14 42 8 336

SO 80M CW
 1 SM7ZDI 71 213 15 3 195
 2 8S6A 48 144 16 2 304
 3 SA1A 26 78 14 1 092
 4 SM6PVB 4 12 4 48

SO AB PHONE LP
 1 SI5S 86 258 29 7 482
 2 SA3BKP 64 192 26 4 992
 3 SM5ISM 52 156 21 3 276
 4 SM0HBV 37 111 15 1 665
 5 SM6JCC 17 51 10 510
 6 SM6MVE 14 42 10 420
 7 SB3W 10 30 8 240

SO AB PHONE HP
 1 SB6A 255 756 32 24 192

SO AB CW LP
 1 SM5MX 303 909 56 50 904
 2 SM6Z 231 693 47 32 571
 3 SF5X 149 447 34 15 198
 4 SM5IMO 127 381 35 13 335
 5 SM7EH 99 297 37 10 989
 6 SM0BDS 92 276 36 9 936
 7 SM7GIB 57 171 29 4 959
 8 SM3EAE 52 156 24 3 744
 9 SM6AHU 54 162 23 3 726
 10 SI5Y 56 168 19 3 192
 11 SM5CIL 32 96 19 1 824
 12 SM5CSS 7 21 6 126

SO AB CW HP
 1 SE6Y 189 567 51 28 917

SO AB MIXED LP
 1 SF3A 209 627 47 29 469
 2 SM5DXR 96 288 34 9 792
 3 SE6N 78 234 35 8 190
 4 SM7UFR 50 150 27 4 050

SO AB MIXED HP
 1 SM6NOC 114 342 32 10 944
 2 SD2G 119 357 28 9 996

SO TB MIXED
 1 SM6FKF 218 654 38 24 852

80M 40M 20M
 2 SE7A 154 462 34 15 708

160M 80M 40M
 3 SM0A 94 282 37 10 434

160M 80M 40M
 4 SK6HD 95 285 23 6 555

80M 40M 20M
 MO AB MIXED
 1 SK7OA 584 1752 73 127 896

SV: GREECE

SO 20M PHONE
 1 SV3DCX 383 1149 16 18 384
 2 SV3AQN 252 756 16 12 096

SO 160M CW
 1 SV3RF 30 90 12 1 080

SO AB CW LP
 1 SV2HWR 251 750 38 28 500
 2 SV8GKE 181 543 37 20 091
 3 SV1PS 67 201 21 4 221

TA: TURKEY

SO 20M CW
 1 YM3KB 92 276 16 4 416
 2 TA2DA 66 198 16 3 168

SO 20M PHONE
 1 TA7EB 69 207 15 3 105

SO AB MIXED LP
 1 TA3X 129 387 19 7 353

SO AB MIXED HP
 1 TA7/KM8W 22 66 13 858

TF: ICELAND

SO 80M CW
 1 TF3SG 1 3 1 3

UA: RUSSIA (EUROPEAN)

SWL MIXED
 1 R3A-847 261 783 61 47 763

SO 10M CW
 1 UA6AK 2 6 2 12

SO 15M CW
 1 RN4AO 46 138 14 1 932
 2 UA4PL 28 84 16 1 344

SO 15M PHONE
 1st RK4FAD 12 36 7 252

SO 20M CW
 1 RW3VA 215 645 16 10 320
 2 R3QA 211 633 16 10 128
 3 RX6AM 206 618 16 9 888
 4 UA3VQL 200 600 16 9 600
 5 RN6AT 199 597 16 9 552
 6 RA1OT 197 591 16 9 456
 7 RO5O 197 591 16 9 456
 8 RD3PX 195 585 16 9 360
 9 RM4R 187 561 16 8 976
 10 RC7A 186 558 16 8 928
 11 RW6HJV/6 183 549 16 8 784
 12 RK3XWO 166 498 16 7 968
 13 RQ5D 165 495 16 7 920
 14 UA4QK 163 489 16 7 824
 15 UA4RW 159 477 16 7 632
 16 UA1ODM 156 468 16 7 488
 17 UA3QR 146 438 16 7 008
 18 R7MT 97 291 15 4 365
 19 R3CW 81 243 16 3 888
 20 RU3MS 75 225 15 3 375
 21 RK6MY 50 150 15 2 250
 22 RK4R 26 78 15 1 170
 23 R7AO 25 75 10 750

SO 20M PHONE
 1 RU3VV 363 1089 16 17 424
 2 RW4PK 248 744 16 11 904
 3 UA4AGO 168 504 16 8 064
 4 R7MP 111 333 16 5 328
 5 RX3DBG 107 321 15 4 815
 6 RV4CT 92 276 16 4 416
 7 RA3DGH 92 276 14 3 864
 8 UA4CNZ 71 213 15 3 195
 9 UA6AES 49 147 15 2 205
 10 RV6LLI 43 129 13 1 677
 11 RA4DX 14 42 9 378

SO 40M CW
 1 R3ZZ 212 636 16 10 176
 2 UA4NBA 149 447 16 7 152
 3 RD3WAR 147 441 16 7 056
 4 RV6LCI 135 405 16 6 480
 5 RW3QF 123 369 16 5 904
 6 RM5O 115 345 16 5 520
 7 RA1AKR 114 342 16 5 472
 8 UA3YFL 102 306 16 4 896
 9 RA3YZ 86 258 16 4 128
 10 RM3P 79 237 16 3 792
 11 UA4LS 70 210 16 3 360
 12 RM3TO 61 183 16 2 928
 13 UA3MIF 61 183 16 2 928
 14 RA3MD 49 147 16 2 352
 15 RX3AP 48 144 14 2 016
 16 RU4SS 39 117 15 1 755

17	RX6MR	34	102	16	1 632
18	UA3X	33	99	16	1 584
19	UA3PC	28	84	14	1 176
SO 40M PHONE					
1	RA3OA	193	573	16	9 168
2	RL3ZH	168	504	16	8 064
SO 80M CW					
1	RW3XM	128	384	16	6 144
2	UA3XAG	80	240	24	5 760
3	R7AC	71	213	16	3 408
4	RA3UAG	58	174	16	2 784
SO 80M PHONE					
1	R3LC	53	159	15	2 385
SO 160M CW					
1	RO3P	60	180	15	2 700
SO 160M PHONE					
1	R3VA	13	39	6	234
2	R7NA	6	18	4	72
3	RM6J	5	15	3	45
SO AB PHONE LP					
1	UA3BL	438	1314	66	86 724
2	UA6YN	404	1212	52	63 024
3	RA3RBL	272	816	44	35 904
4	RW1CW	165	495	41	20 295
5	UA6HHE	141	423	36	15 228
6	R4RR	105	315	21	6 615
7	RA3YDA	75	225	28	6 300
8	UA4NDX	64	192	31	5 952
9	R3AAA	54	162	23	3 726
10	RV1AE	47	138	23	3 174
11	RN3ZIN	43	129	19	2 451
SO AB PHONE HP					
1	RN3ZC	596	1788	74	132 312
2	UI4I	589	1767	67	118 389
3	UA3VFS	416	1248	49	61 152
4	RN4HJQ	183	549	35	19 215
5	RZ4HC	45	135	15	2 025
SO AB CW LP					
1	UA4FCO	397	1191	85	101 235
2	UA4ALI	404	1212	71	86 052
3	RO6A	394	1182	62	73 284
4	UA3RC	300	900	73	65 700
5	UA3DA	311	933	66	61 578
6	RV4AB	252	756	68	51 408
7	RD3QA	259	777	63	48 951
8	RX4AW	256	768	62	47 616
9	RA6AN	243	729	64	46 656
10	RA4HMT	188	564	67	37 788
11	RN4SS	198	594	61	36 234
12	UA3QAM	199	597	56	33 432
13	UA6HFI	207	621	48	29 808
14	RU4LM	232	696	40	27 840
15	RA3XCZ	181	543	51	27 693
16	RA3G	186	558	45	25 110
17	RV6APN	135	405	49	19 845
18	RX6LOL	118	354	56	19 824
19	RA3ID	151	453	43	19 479
20	R3EA	132	396	45	17 820
21	RA3ATE	124	372	46	17 112
22	RK3CQ	128	384	42	16 128
23	RN2DA	133	399	40	15 960
24	RA6FUZ	161	483	32	15 456
25	RA3VE	74	222	37	8 214
26	RK6LP	71	213	31	6 603
27	UA1AAU	123	369	16	5 904
28	RX4HJ	58	174	33	5 742
29	RN3DKE	66	198	23	4 554
30	R1AUR	33	99	20	1 980
31	UG3G	34	102	16	1 632
32	RD3FT	13	39	10	390
33	RW3DOX	12	36	7	252
SO AB CW HP					
1	RT3T	566	1698	82	139 236
2	RT3F	400	1200	76	91 200
3	RX3DBH	375	1125	60	67 500
4	RZ3TZZ	342	1026	63	64 638
5	RA1TU	317	951	63	59 913
6	RK1NA	220	660	52	34 320
7	RW6AMP	199	597	56	33 432

8	RA6MQ	193	579	57	33 003
9	RT3N	153	459	52	23 868
10	RA1QD	99	297	33	9 801
11	RW4PL	29	87	17	1 479
SO AB MIXED LP					
1	RU4SO	516	1548	57	88 236
2	RX4YY	343	1029	49	50 421
3	RN4CA	305	915	54	49 410
4	R1AT	224	672	51	34 272
5	UA4PAQ	216	648	48	31 104
6	RV3ZN	155	465	33	15 345
7	RU3SF	154	462	28	12 936
SO AB MIXED HP					
1	RK3M	862	2586	69	178 434
2	UA4PN	684	2052	74	151 848
3	RA3NC	491	1473	58	85 434
4	RW6AN	290	870	46	40 020
5	RA6AR	190	570	24	13 680
6	RT3G	96	288	16	4 608
SO TB MIXED					
1	RK4YJ	405	1215	47	57 105
80M 40M 20M					
2	RG5A	293	879	48	42 192
80M 40M 20M					
3	RU4AA	280	840	46	38 640
80M 40M 20M					
4	R3QX	225	675	42	28 350
40M 20M 15M					
5	RA3TA	163	489	41	20 049
80M 40M 20M					
6	RK3DU	83	249	34	8 466
80M 40M 20M					
7	RU3GF	161	483	16	7 728
20M					
8	RT1A	81	243	29	7 047
80M 40M 20M					
9	UB3DAO	35	105	19	1 995
40M 20M 15M					
MO AB MIXED					
1	RN3F	1 055	3165	76	240 540
2	RZ4FWW	871	2613	85	222 105
3	RK4HYT	389	1167	64	74 688
UA2: KALININGRAD					
SO 40M CW					
1	RK2FWN	93	279	16	4 464
SO 40M PHONE					
1	UA2AN	71	213	15	3 195
2	UA2FGQ	14	42	11	462
SO 80M CW					
1	UA2FL	61	183	16	2 928
MO AB MIXED					
1	RK2FXB	31	93	20	1 860
UA9: RUSSIA (ASIATIC)					
SWL MIXED					
1	R90-11	39	117	23	2 691
SO 15M CW					
1	RK0AB	140	420	16	6 720
2	ROAA	118	354	16	5 664
2	RU0A	47	141	15	2 115
3	RT9T	22	66	11	726
SO 15M PHONE					
1	R9RA	134	402	14	5 628
SO 20M CW					
1	RM9U	196	588	16	9 408
2	RW0AJ	172	516	16	8 256
3	UF8T	135	405	16	6 480
4	UA9CCL	108	324	16	5 184
5	RZ9YB	93	279	16	4 464
6	RT8I	78	234	16	3 744
7	RA9UIV/9	19	57	12	684
8	RL9U	19	57	9	513
9	UA0OD	15	45	10	450
SO 20M PHONE					
1	RZ9UI	325	975	16	15 600
2	RA9DR	153	459	16	7 344
3	RW9TP	148	444	16	7 104

4	RX9CCJ	82	246	15	3 690
5	RA9UGU	28	84	12	1 008
6	RK9DO	9	27	6	162
SO 40M CW					
1	RA9AP	157	471	16	7 536
2	RAOAM	69	207	16	3 312
3	UA9UKL	21	63	11	693
SO 80M CW					
1	R9WW	46	138	16	2 208
SO 80M PHONE					
1	RW9CD	39	117	14	1 638
SO AB PHONE LP					
1	UA9SIV	408	1224	58	70 992
2	RZ9UGN	163	489	33	16 137
3	R9FR	114	342	36	12 312
4	R8XA	122	366	25	9 150
5	R9XAA	114	342	25	8 550
6	RZ0WK	84	252	29	7 308
7	UA0SJ	45	135	21	2 835
SO AB PHONE HP					
1	RO9O	592	1776	62	110 112
2	RX9JD	195	585	35	20 475
3	RV9YP	92	276	28	7 728
4	RA9JBA	33	99	22	2 178
SO AB CW LP					
1	RT9S	422	1266	75	94 950
2	R9AX	353	1059	64	67 776
3	UD8A	310	930	71	66 030
4	UA9W	213	639	52	33 228
5	RA9MX	204	612	47	28 764
6	UA9WOB	169	507	41	20 787
7	RN9RF	213	639	32	20 448
8	RZ8U	176	528	32	16 896
9	UA9AAG	118	354	42	14 868
10	RA9FEU	62	186	23	4 278
11	RU9CI	51	153	26	3 978
12	UA9XBJ	48	144	25	3 600
13	RA0AY	31	93	21	1 953
SO AB CW HP					
1	RT9A	378	1134	64	72 576
2	UA9FGJ	294	882	71	62 622
3	UA9CU	102	306	38	11 628
SO AB MIXED LP					
1	R8MD	274	822	57	46 854
2	RV9CM	189	567	36	20 412
3	UA8WAA	112	336	51	17 136
SO AB MIXED HP					
1	UA9CDC	366	1098	68	74 664
2	R8MC	361	1083	63	68 229
3	UA9XF	447	1341	48	64 368
4	RF9C	423	1269	44	55 836
5	RL9AA	260	780	47	36 660
6	RN9A	147	441	45	19 845
7	UA9CGL	116	348	16	5 568
8	R9XT	50	150	23	3 450
9	RZ9UO	45	135	24	3 240
SO TB MIXED					
1	RA9JP	508	1524	39	59 436
40M 20M 15M					
2	RK9QWM	573	1719	32	55 008
20M 15M 10M					
3	RU9WZ	241	723	38	27 474
40M 20M 15M					
4	UA9R	199	597	31	18 507
20M 15M 10M					
5	RA9UN	169	507	32	16 224
20M 15M					
MO AB MIXED					
1	RK9Q	415	1245	61	75 945
2	RK9SWF	347	1041	48	49 968
3	RK9CYA	309	927	51	47 277
UK: UZBEKISTAN					
SO TB MIXED					
1	UK8AR	240	720	47	33 840
20M 15M 10M					

UN: KAZAKHSTAN

SO 15M CW					
1	UN7CN	68	204	13	2 652
SO 15M PHONE					
1	UN6LN	262	786	16	12 576
SO AB CW LP					
1	UN8PT	217	651	59	38 409
2	UN7FW	94	282	39	10 998
SO AB MIXED LP					
1	UN7EX	148	444	39	17 316
SO AB MIXED HP					
1	UN9L	837	2511	74	185 814
2	UN8GV	441	1323	49	64 827
3	UN9LW	309	927	57	52 839
SO TB MIXED					
1	UN6QC	44	132	17	2 244
40M 20M					
MO AB MIXED					
1	UN8LWF	627	1881	64	120 384

UR: UKRAINE

SWL MIXED					
1	US-Q-73	73	219	33	7 227
2	US-P-39	93	279	24	6 696
SO 20M CW					
1	US7ISE	122	366	16	5 856
2	UT8IO	113	339	16	5 424
3	UU9JK	73	219	16	3 504
4	UT3EK	68	201	15	3 015
5	UR5EPG	45	135	14	1 890
6	UY7IS	24	72	14	1 008
SO 20M PHONE					
1	UT3QD	208	624	16	9 984
2	UR5MM	206	618	16	9 888
3	US4IQS	131	393	16	6 288
4	UZ0U	111	333	15	4 995
SO 40M CW					
1	UR5IFB	162	486	16	7 776
2	UT1XX	143	429	16	6 864
3	UW2F	133	399	16	6 384
4	UT8QQ	110	330	16	5 280
5	US2MW	107	321	16	5 136
6	UY0CA	93	279	16	4 464
7	UT4NY	84	252	16	4 032
8	US7IY	54	162	16	2 592
9	UT4WT	49	147	16	2 352
10	UX4FC	5	15	5	75
SO 40M PHONE					
1	UT8LN	201	603	16	9 648
2	UY4WWA	198	594	16	9 504
3	UR5WCE	180	540	16	8 640
4	UY8IO	157	471	16	7 536
SO 80M CW					
1	UW1WU	123	369	16	5 904
2	UU5AF	115	345	16	5 520
3	UR5FAC	113	339	16	5 424
4	UT3WJ	107	321	16	5 136
5	UT5NC	107	321	16	5 136
6	UR7QC	106	318	16	5 088
7	UR2P	99	297	16	4 752
8	UR5PG	94	282	16	4 512
9	UT8L	89	267	16	4 272
10	UR4IZ	82	246	16	3 936
11	UR4WG	58	174	16	2 784
12	UT3L	57	171	16	2 736
13	UT7VR	58	174	15	2 610
14	UX6VA	56	168	14	2 352
SO 80M PHONE					
1	UT3SA	244	732	16	11 712
2	UX1VT	186	558	16	8 928
3	UR5WCQ	166	498	16	7 968
4	UT4IZL	152	456	16	7 296
5	UR5ZIW	68	204	16	3 264
6	UT7Y	54	162	16	2 592
7	UR5WHT	51	153	16	2 448
SO 160M CW					
1	UT5XM	52	156	14	2 184
2	US0QG	29	87	16	1 392

3	US2IR	26	78	11	858
SO AB PHONE LP					
1	UY9IF	291	873	48	41 904
2	UT5JCE	278	834	46	38 364
3	UV5EEO	127	381	48	18 288
4	US5IND	80	240	29	6 960
5	US5ISV	58	174	22	3 828
SO AB PHONE HP					
1	UR5GDX	646	1938	73	141 474
2	UZ2L	310	930	51	47 430
SO AB CW LP					
1	UT3QU	264	792	64	50 688
2	UU2J	295	885	55	48 675
3	UT3N	274	822	57	46 854
4	US3IZ	194	582	55	32 010
5	UR5KO	245	735	43	31 605
6	UR6LAF	198	594	44	26 136
7	UU1JE	164	492	44	21 648
8	UY5ME	140	420	50	21 000
9	UY2ZZ	119	357	39	13 923
10	UR7ZO	116	348	38	13 224
11	UT3UZ	106	318	40	12 720
12	UX1IB	124	372	30	11 160
13	UT7MR	98	294	31	9 114
14	UR5EFL	86	258	32	8 256
15	UX1CW	68	204	16	3 264
16	UT7MD	43	129	23	2 967
17	UX2HB	39	117	13	1 521
SO AB CW HP					
1	UR5MBA	212	636	52	33 072
2	UT8EU	109	327	16	5 232
SO AB MIXED LP					
1	UU2CW	630	1890	70	132 300
2	UT2LF	337	1011	69	69 759
3	UU1K	389	1167	29	33 843
4	UT5EOX	183	549	44	24 156
5	UX8IW	132	396	42	16 632
6	UR3PGW	96	288	15	4 320
SO AB MIXED HP					
1	US3LX	51	153	25	3 825
SO TB MIXED					
1	UY2IG	502	1506	48	72 288
80M 40M 20M					
2	UR5IFX	286	858	46	39 468
80M 40M 20M					
3	US5E	268	804	43	34 572
160M 80M 40M					
4	UT5CY	213	639	47	30 033
80M 40M 20M					
5	UT1IM	306	918	32	29 376
40M 20M					
6	UX3HA	166	498	42	20 916
160M 80M 40M					
7	UT5ECZ	140	420	46	19 320
160M 80M 40M					
MO AB MIXED					
1	UW3E	805	2415	67	161 805
2	UR4PWC	324	972	57	55 404
3	UT1KWA	211	633	16	10 128
4	UX8IXX	69	207	28	5 796
VE: CANADA					
SO 15M PHONE					
1	VA3APZ	19	57	11	627
SO 20M PHONE					
1	VE3PIJ	67	201	15	3 015
2	VE3ZOC	44	132	15	1 980
3	VA3GKO	31	93	14	1 302
4	VE3NI	27	81	13	1 053
5	VA3GUY	4	12	4	48
SO 40M CW					
1	VE3PND	28	84	14	1 176
SO AB PHONE LP					
1	VE3DXP	117	351	39	13 689
2	VO1BBN	89	267	41	10 947
3	VE1ZA	11	33	9	297

SO AB PHONE HP					
1	VE3BDN	144	432	24	10 368
2	VA3LUK	37	111	20	2 220
SO AB CW LP					
1	VE1RGB	203	609	59	35 931
2	VE3OM	101	303	32	9 696
3	VE2XAA	44	132	20	2 640
SO AB CW HP					
1	VA3EF	361	1083	66	71 478
2	VE9HF	96	288	40	11 520
SO AB MIXED LP					
1	VE9ML	146	438	43	18 834
2	VE3TW	71	213	23	4 899
3	VE4YU	20	60	14	840
SO AB MIXED HP					
1	VE1OP	265	795	46	36 570
2	VE3HBZ	81	243	14	3 402
SO TB MIXED					
1st	VA3PL	271	813	44	35 772
40M 20M 15M					
VK: AUSTRALIA					
SO 20M CW					
1	VK3CTN	69	207	16	3 312
SO 20M PHONE					
1	VK3AVV	21	63	12	756
SO 40M CW					
1	VK2AR	20	60	11	660
SO 40M PHONE					
1	VK5FIVE	1	3	1	3
SO AB PHONE LP					
1	VK4ATH	58	174	23	4 002
SO AB CW LP					
1	VK4TT	23	69	13	897
2	VK6DXI	14	42	10	420
SO AB CW HP					
1	VK7GN	57	171	31	5 301
VU: INDIA					
SO AB CW LP					
1	VU2UR	36	108	23	2 484
YB: INDONESIA					
SO 15M PHONE					
1	YB1UUN	35	105	15	1 575
SO AB CW LP					
1	YB3XM	116	348	35	12 180
SO AB CW LP					
1	YB1ALL	78	234	28	6 552
SO AB MIXED LP					
1	YB3IZK	85	255	29	7 395
YL: LATVIA					
SO 20M CW					
1	YL3DX	7	21	5	105
SO 40M PHONE					
1	YL3GAO	179	537	16	8 592
2	YL1XN	121	363	16	5 808
SO 80M CW					
1	YL2HK	74	222	16	3 552
2	YL2TD	36	108	13	1 404
SO 80M PHONE					
1	YL2NK	11	33	9	297
2	YL3AGV	12	36	7	252
SO AB CW LP					
1	YL2CV	316	948	61	57 828
2	YL2QS	116	348	26	9 048
SO AB CW HP					
1	YL5T	28	84	17	1 428
SO AB MIXED LP					
1	YL2TB	452	1356	46	62 376
2	YL2II	110	330	35	11 550
SO TB MIXED					
1st	YL5M	423	1269	45	57 105
160M 80M 40M					
2	YL2PA	261	783	46	36 018
160M 80M 40M					

YO: ROMANIA

SO 20M CW					
1	YO5AVN	65	195	16	3 120
2	YO7ARZ	56	168	12	2 016
SO 40M CW					
1	YO4BEW	69	207	16	3 312
SO 40M PHONE					
1	YO8RFJ	34	102	12	1 224
SO 80M CW					
1	YO8WW	31	93	13	1 209
SO 80M PHONE					
1	YO5OHY	133	399	16	6 384
SO 160M CW					
1	YO5AJR	69	207	15	3 105
2	YO2RR	54	162	15	2 430
3	YO5DAS	8	24	6	144
SO AB PHONE LP					
1	YO8SGN	125	375	29	10 875
2	YO4US	78	234	23	5 382
3	YO9IXC	46	138	23	3 174
4	YO2LXW	39	117	24	2 808
SO AB PHONE HP					
1	YO3CZW	560	1680	88	110 880
SO AB CW LP					
1	YO9AGI	234	702	58	40 716
2	YO4AR	106	318	41	13 038
3	YO3BAP	85	255	36	9 180
4	YO9HG	73	219	36	7 884
5	YO2MJZ	80	240	29	6 960
SO AB MIXED HP					
1	YR1C	140	420	34	14 280
SO TB MIXED					
1	YO9WF	595	1785	48	85 680
80M 40M 20M					
2	YO4DW	346	1038	40	41 520
80M 40M 20M					
3	YO2GL	200	600	43	25 800

160M 80M 40M

MO AB MIXED

1 YR2X 106 318 36 11 448

YU: SERBIA

SO 20M CW					
1	YT1Q	72	216	16	3 456
SO 40M CW					
1	YT8A	148	444	16	7 104
2	YT5M	137	411	16	6 576
3	YU2A	74	222	16	3 552
4	YU2FG	37	111	13	1 443
SO 40M PHONE					
1	YU5EQP	60	180	14	2 520
SO 80M CW					
1	YT4A	135	405	16	6 480
2	YU5T	114	342	16	5 472
3	YU5C	55	165	16	2 640
4	YU1ML	16	48	10	480
SO AB CW HP					
1	YT9A	17	51	11	561
SO AB MIXED LP					
1	YU1AAV	68	204	19	3 876

Z3: MACEDONIA

SO 20M CW					
1	Z35F	190	570	16	9 120
2	Z31WW	94	282	16	4 512

ZL: NEW ZEALAND

SO 40M CW					
1st	ZL2AGY	21	63	14	882
SO AB PHONE HP					
1st	ZL2UO	103	309	19	5 871

FINAL RESULTS – SO AB MIXED QRP – CONTINENTAL CLASSIFICATION (without Poland)

ASIA

1	RA9MU	60	180	31	5 580
2	RC9YA	38	114	23	2 622
3	UA0SBQ	20	60	16	960
4	UA9FM	17	51	9	459
5	JH3DMQ	9	27	7	189
6	JJ5HUD	4	12	2	24
7	JA0VTK	1	3	1	3

EUROPE

1	UA6LCJ	298	894	66	59 004
2	RU7A	284	852	61	51 972
3	OK2BUT	307	921	46	42 366
4	LZ7H	248	744	47	34 968
5	UT7MT	151	453	46	20 838
6	RW3AI	147	441	43	18 963
7	F5UKL	136	408	41	16 728
8	ON7CC	130	390	42	16 380
9	UR5MIJ	117	351	45	15 795
10	OM4AA	101	303	40	12 120
11	UU7JD	118	354	31	10 974
12	SM6CRM	117	351	29	10 179
13	LZ2JR	88	264	33	8 712
14	UA7G	88	264	31	8 184
15	RK6AQM	103	309	24	7 416
16	EI6KC	133	396	16	6 336
17	ES4RX	55	165	32	5 280
18	F6FTB	60	180	27	4 860
19	RV3DBK	63	189	25	4 725

20	UR8IW	72	216	16	3 456
21	PC2F	54	162	20	3 240
22	YO4AAC	45	135	24	3 240
23	OK2NA	41	123	21	2 583
24	IK3OII/QRP	51	153	15	2 295
25	G6CSY	45	135	14	1 890
26	SA3BGM	45	135	14	1 890
27	RX3DIS	20	60	11	660
28	DO2JR	18	54	12	648
29	9A7ZZ	19	57	10	570
30	IK0VWH	18	54	9	486
31	RZ3MM	16	48	10	480
32	M0CEF	11	33	11	363
33	HA5BA	10	30	10	300
34	RT4W	11	33	8	264
35	IK2GWH/QRP	12	36	6	216
36	DL1RNN	10	30	5	150
37	I/W9CF	6	18	5	90
38	UR5FCM	2	6	2	12

NORTH AMERICA

1	VE3KZ	12	36	9	324
2	WB0IWG	11	33	8	264
3	KA9O	3	9	3	27
4	WB2R	3	9	3	27

SOUTH AMERICA

1	PY4ZO	30	90	21	1 890
---	-------	----	----	----	-------

FINAL RESULTS – POLAND

SWL MIXED

1	SP-0142-JG	285	440	134	58 960
2	SP6-01-032	119	119	58	6 902
3	SP2-16004	71	129	31	3 999
4	SP4-208	78	82	47	3 854
5	SP7-15-045	16	16	14	224
6	SP9-29049	11	13	10	130
7	SP4-21-201	7	17	5	85
8	SP9-29046	10	12	7	84
9	SP5-25-0758	5	9	5	45
10	SP4-21-199	3	7	3	21

SO 10M CW

1	SP3LWP	27	60	14	840
2	SP7IIT	20	48	11	528
3	SP2GCE	16	36	9	324
4	SP5XO	14	36	8	288
5	SP9DWT	11	29	9	261
6	SP8FNA	5	13	5	65

SO 10M PHONE

1	SP2BME	1	3	1	3
1	SP8BWR	1	3	1	3

SO 15M CW

1	SP5DIR	245	580	45	26 100
2	SP1NQN	244	564	46	25 944
3	SP2EFU	167	419	34	14 246
4	SP2JLR	167	407	34	13 838
5	SP3LPG	120	318	29	9 222
6	SO9D	96	252	24	6 048
7	SP7CVW	90	218	21	4 578
8	SP7EXY	74	196	17	3 332
9	SP7PFD	60	164	16	2 624
10	SP4GFG	43	113	14	1 582
11	SP2AYC	46	118	12	1 416
12	SP2EWQ	42	88	13	1 144
13	SQ7MPJ	25	69	10	690

SO 15M PHONE

1	SP9RPW	176	460	28	12 880
2	SP1NQH	145	387	31	11 997
3	SP1RKT	115	281	35	9 835
4	SP9EJH	123	317	28	8 876
5	SN8Q	131	323	25	8 075
6	SQ6R	101	264	30	7 920
7	SP9DFH	99	245	20	4 900
8	SP4ICD	75	169	25	4 225
9	SP6OJJ	80	220	18	3 960
10	SP9NH	76	196	19	3 724
11	SN1T	64	162	22	3 564
12	SO1D	64	166	20	3 320
13	SP3TYF	58	144	16	2 304
14	SP6FXF	42	114	17	1 938
15	SP8HMZ	44	104	18	1 872
16	SP3JBI	45	113	15	1 695
17	SP5FKW	30	78	12	936
18	SP1II	18	50	9	450
19	SP9LAW	20	52	8	416

SO 20M CW

1	SP4INT	582	1048	59	61 832
2	SN7O	526	959	54	51 786
3	SP8NR	521	895	54	48 330
4	SP3FYX	474	876	53	46 428
5	SP2LNV	494	862	52	44 824
6	SP9W	433	769	48	36 912
7	SN5N	425	713	46	32 798
8	SP7FAH	386	650	48	31 200
9	SP5UD	332	560	43	24 080
10	SP6TGC	286	470	44	20 680
11	SP9KRT	258	418	41	17 138

12	SP6JOE	261	415	41	17 015
13	SP6IWG	245	391	33	12 903
14	SP2EPV	158	285	42	11 970
15	SP9BCH	213	353	31	10 943
16	SP3FGQ	214	339	31	10 509
17	SP9RI	169	247	32	7 904
18	SP2FAV	172	271	28	7 588
19	SP9CV	127	221	33	7 293
20	SP8JMA	150	207	34	7 038
21	SP2AEK	128	210	27	5 670
22	SP5AUC	120	188	27	5 076
23	SP2MKI	114	182	25	4 550
24	SP4TBM	108	178	25	4 450
25	SP1HJK	106	152	25	3 800
26	SP2IQN	78	117	22	2 574
27	SP6XP	76	126	20	2 520
28	SP9CZG	62	104	24	2 496
29	SP5XOC	91	119	20	2 380
30	SP9XCJ	65	103	19	1 957
31	SP3JIA	55	115	17	1 955
32	SP2BKX	71	105	18	1 890
33	SQ2TOM	69	85	22	1 870
34	SP7RJI	68	89	16	1 424
35	SN8M	33	51	13	663
36	SP8NTH	37	53	9	477
37	SP6NIK	25	27	10	270

SO 20M PHONE

1	SP4XQN	411	752	43	32 336
2	SP2FUD	356	704	45	31 680
3	SP9ODY	399	673	44	29 612
4	SQ7DQX	351	549	44	24 156
5	SP3NNH	288	542	38	20 596
6	SP3VSE	295	537	37	19 869
7	SP9IEK	231	333	35	11 655
8	SQ9HQ	208	328	35	11 480
9	SQ3MKW	251	465	24	11 160
9	SQ9OH	208	310	36	11 160
11	SP5CKA	167	270	36	9 720
12	SQ3NTN	176	298	32	9 536
13	SQ3OGZ	194	298	29	8 642
14	SP6VWX	165	241	33	7 953
15	SP7TEE	174	238	30	7 140
16	SP6HED	164	250	28	7 000
17	SP3LAU	152	230	30	6 900
18	SP2GTJ	152	236	27	6 372
19	SQ4G	138	239	25	5 975
20	SP2FNS	128	198	30	5 940
21	SP3YE	126	204	29	5 916
22	SP5FCZ	146	216	26	5 616
23	SP9BZM	132	198	26	5 148
24	SQ3XBC	126	204	25	5 100
25	SP6DNS	112	190	26	4 940
26	SP3DRM	118	184	23	4 232
27	SP4JEU	116	166	25	4 150
28	SP9GXW	115	167	24	4 008
29	SQ2DMX	102	168	23	3 864
30	SP8QJM	122	168	22	3 696
31	SP5DRE	92	150	24	3 600
32	SP9NSJ	96	136	26	3 536
33	SP7HIW	104	150	22	3 300
34	SP3YM	85	133	23	3 059
35	SP1JON	81	135	22	2 970
36	SP100MSC	92	118	24	2 832
37	SP9BMH	75	117	23	2 691
38	SP3FTA	80	114	22	2 508
39	SQ9ITV	72	104	22	2 288
40	SQ9APU	80	116	19	2 204
41	SQ9SX	70	110	20	2 200
42	SP1APZ	65	93	23	2 139
43	SQ9LOM/P	87	127	16	2 032
44	SP2DTO	65	103	19	1 957
45	SO8L	78	102	19	1 938

46	SP5LGN	80	120	16	1 920
47	SP4HXV	48	88	21	1 848
48	SQ3LVZ	68	98	18	1 764
49	SP4SKN	78	102	17	1 734
50	SP4HXS	60	86	20	1 720
51	SP3JFV	69	89	19	1 691
52	SP2DNT	62	86	18	1 548
53	SQ3HLB	46	74	18	1 332
54	SP7LSL	51	75	17	1 275
55	SP9SPN	55	73	17	1 241
56	SQ9MEE	45	61	17	1 037
57	SP7IXT	33	51	17	867
58	SP9IVD	36	54	15	810
59	SQ1WO	46	58	13	754
60	SP5BUJ	37	51	14	714
61	SQ4OLC	27	39	13	507
62	SP3RAT	27	35	13	455
63	SQ2JAM	14	20	8	160
64	SQ2LYC	14	20	8	160
65	SP6BBE	11	11	7	77
66	SP8DIP	9	11	7	77
67	SP5OXE	5	5	4	20

SO 40M CW

1	SN3X	668	910	51	46 410
2	SP3LPR	676	908	50	45 400
3	SP6OJE	650	854	52	44 408
4	SO8N	670	892	48	42 816
5	SP5AUJ	644	801	49	39 249
6	SP6CJK	566	736	44	32 384
7	SP3DIK	436	522	41	21 402
8	SP3GTS	422	505	40	20 200
9	SP4NKS	416	472	41	19 352
10	SP5ADX	384	456	42	19 152
11	SP8BVN	415	477	39	18 603
12	SP4FKS	400	464	39	18 096
13	SP2BRI	382	448	39	17 472
14	SP4DNX	363	391	36	14 076
15	SP5CJQ	284	296	33	9 768
16	SP2MHC	241	265	36	9 540
17	SP2HWW	242	291	32	9 312
18	SP8BWE	213	272	32	8 704
19	SP8BVO	212	234	32	7 488
20	SP9QJ	207	220	29	6 380
21	SP9EM	160	188	33	6 204
22	SP2CA	170	178	28	4 984
23	SP6FCQ	94	120	33	3 960
24	SP5PBE	121	133	26	3 458
25	SP3GVW	113	113	22	2 486
26	3Z6AEF	71	81	23	1 863
27	SP2IHI	61	61	18	1 098
28	SP2MKT	37	71	15	1 065
29	SQ9FMU	40	46	19	874
30	SP6TRH	36	46	17	782
31	SQ6ADB	25	25	12	300

SO 40M PHONE

1	SN3S	514	668	59	39 412
2	SP2EXN	343	377	44	16 588
3	SP8RHL	236	262	42	11 004
4	SP9HZF	217	243	41	9 963
5	SP5BBG	178	196	38	7 448
6	SP8VJV	132	157	37	5 809
7	SP7SEW	146	156	36	5 616
8	SQ9CXC	117	137	36	4 932
9	SP3AAI	133	145	34	4 930
10	SQ9KDO	121	131	31	4 061
11	SP5XXX/8	111	122	31	3 782
12	SQ1GPR	97	107	31	3 317
13	SQ9OKV	103	113	29	3 277
14	SP5MNT	94	106	30	3 180
15	SP1MVG	101	101	23	2 323
16	SP9CQ	70	80	28	2 240
17	SQ6KV	85	93	21	1 953
18	SQ9MUO	73	79	23	1 817
19	SP2IRR	63	71	22	1 562

20	SP5CJG	57	65	24	1 560
21	SP9JZT	65	69	22	1 518
22	SQ6GGT	58	66	23	1 518
23	SP5LCS	44	60	24	1 440
24	SQ5IZX	53	61	21	1 281
25	SP9MAX	49	55	21	1 155
26	SP9NRU	55	59	19	1 121
27	SP6AKI	46	50	20	1 000
28	SP3OKI	30	34	15	510
29	SP6HDS	16	26	9	234

SO 80M CW

1	SP0PZK	441	533	45	23 985
2	SO6C	433	529	43	22 747
3	SP9XCN	407	487	41	19 967
4	SP4JCQ	407	485	41	19 885
5	SO4P	373	443	38	16 834
6	SP3SLU	339	394	42	16 548
7	SP1RKR	366	432	37	15 984
8	SP2LQC	335	389	41	15 949
9	SP4AWE	328	368	36	13 248
10	SP4GL	305	351	36	12 636
11	SP5MNI	290	314	35	10 990
12	SP7JLH	271	309	34	10 506
13	SQ1PSA	204	220	28	6 160
14	SO2O	152	166	26	4 316
15	SP8GNF	87	91	21	1 911
16	SP2BMX	16	18	9	162
17	SP5BMP	18	18	9	162

SO 80M PHONE

1	SP3GEM	222	287	41	11 767
2	SP6PAZ	182	204	34	6 936
3	SP3OZW	171	183	31	5 673
4	SP4SHD	118	124	28	3 472
5	SP7FOI	123	127	23	2 921
6	SP8BJU	82	86	27	2 322
7	SQ2HNA	83	85	22	1 870
8	SP6JOQ	67	69	25	1 725
9	SP2HGV	57	59	22	1 298
10	SQ9OKD	58	58	21	1 218
11	SP6MLF	54	56	21	1 176
12	SP9AMN	50	52	20	1 040
13	SP8OOB	43	49	20	980
14	SQ9JJN	40	42	18	756
15	SP1CWS	35	35	15	525
16	SP4SAF	28	30	17	510
17	SQ1VAA	25	29	14	406
18	SQ9NOS	30	30	13	390
19	SP6FIK	24	26	14	364
20	SQ9JXJ	21	23	11	253
21	SP8YFN	11	11	7	77
22	SP9BGL	6	10	5	50
23	SQ3PLQ	6	6	4	24
24	SP9UOA	2	2	2	4

SO 160M CW

1	SP7JQQ	189	223	34	7 582
2	SN9Z	168	198	33	6 534
3	SP1GZF	166	194	31	6 014
4	SP6AEG	150	178	30	5 340
5	SQ7FPD	65	70	20	1 400
6	SP9WR	39	39	16	624
7	SP8LBK	15	14	9	126

SO 160M PHONE

1	SO8R	91	101	27	2 727
2	SQ9IAU	65	67	23	1 541
3	SQ1OD	48	48	21	1 008
4	SQ3HMM	29	26	13	338
5	SP6CC	14	16	10	160
6	SQ2RGB	10	10	8	80

SO AB PHONE LP

1	SP9AQF	632	992	128	126 976
2	SP3GXH	502	874	122	106 628

3	SP2QOT	393	535	109	58 315
4	SQ2OSE	444	552	101	55 752
5	SP5NZA	337	499	105	52 395
6	SP2OVQ	363	530	96	50 880
7	SP7CCB	391	509	99	50 391
8	SQ6NEJ	336	468	93	43 524
9	SP9OYB	297	445	97	43 165
10	SN7S	401	517	81	41 877
11	SQ4CTS	373	443	89	39 427
12	SQ7VO	280	442	88	38 896
13	SN9L	332	476	76	36 176
14	SQ2OMB	257	369	93	34 317
15	SP8CIV	245	365	90	32 850
16	SP7TEX	250	374	85	31 790
17	SQ3HXH	253	367	83	30 461
18	SQ2OMG	284	402	75	30 150
19	SQ9CWO	240	346	86	29 756
20	SP6RYD	255	379	76	28 804
21	SN1C	245	329	82	26 978
22	SP3HZG	228	324	81	26 244
23	SP1FFC	235	333	75	24 975
24	SQ2WHH	266	324	77	24 948
25	SP2EUI	210	300	81	24 300
26	SP4ELN	218	298	80	23 840
27	SP6ZJP	197	291	79	22 989
28	SN1J	223	355	63	22 365
29	SP5X	240	298	75	22 350
30	SQ7WPA	186	305	73	22 265
31	SP4CUF	226	309	72	22 248
32	SQ5TA	247	313	69	21 597
33	SP1QXK	211	363	59	21 417
34	SQ9NIN	205	299	71	21 229
35	SP3UIW	197	309	66	20 394
36	SP8TJK	191	245	78	19 110
37	SP2ILQ	206	268	71	19 028
38	SP9UXS	176	276	67	18 492
39	SQ5EF	178	260	71	18 460
40	SQ9NJ	172	274	66	18 084
41	SQ9DXT	213	266	64	17 024
42	SP5UGP/5	186	252	67	16 884
43	SQ8MXC	181	259	65	16 835
44	SQ7HJB	191	233	72	16 776
45	SP4LVK	170	285	58	16 530
46	SP4FMD	156	230	68	15 640
47	SQ2EAN	169	225	69	15 525
48	SQ8LSB	206	256	58	14 848
49	SQ9NIU	161	231	64	14 784
50	SQ8AQO	160	216	66	14 256
51	SN1Z	164	260	54	14 040
52	SP9TPZ	151	219	63	13 797
53	SP6OPZ	219	265	51	13 515
54	SQ8LSC	136	222	58	12 876
55	SQ5NWD	157	223	57	12 711
56	SQ4INW	174	198	64	12 672
57	SQ7OBB	177	225	56	12 600
58	SP9JKL	157	233	53	12 349
59	SP9MZX	183	213	56	11 928
60	SP3JZX	150	182	63	11 466
61	SP3SPK	173	219	51	11 169
62	SQ8GUM	132	190	58	11 020
63	SO5D	132	198	55	10 890
64	SP5ISZ	137	209	49	10 241
65	SP6OWA	139	181	53	9 593
66	SQ8OGC	121	177	53	9 381
67	SP5ENA	119	191	49	9 359
68	SP7FDV	126	176	52	9 152
69	SP9OJM	141	159	57	9 063
70	SP9RTL	135	159	57	9 063
71	SQ3KLM	117	167	54	9 018
72	SQ5NWH	130	178	50	8 900
73	SP8BXL	130	178	49	8 722
74	SP9DSD	152	266	32	8 512
75	SQ2BNM	108	168	50	8 400
76	SP4CGJ	95	155	53	8 215
77	SP5NHK	103	142	55	7 810
78	SQ4RCU	112	162	46	7 452
79	SP6GTN	112	210	35	7 350

80	SQ8JMC	107	155	47	7 285
81	SQ5OUO	139	153	46	7 038
82	SP9VRY	104	124	56	6 944
83	SQ5STN	92	142	48	6 816
84	SQ8MXS	88	142	48	6 816
85	SQ8MFE	106	144	47	6 768
86	SQ9JXN	105	125	52	6 500
87	SP1VDV	125	137	47	6 439
88	SQ8MHH	100	132	48	6 336
89	SQ8JMZ	94	124	51	6 324
90	SP3NYF	95	139	45	6 255
91	SQ4IOH	95	115	54	6 210
92	SP1DMD	92	129	48	6 192
93	SQ4O	107	161	38	6 118
94	SP2OFP	93	143	42	6 006
95	SN8L	109	141	42	5 922
96	SP6BXP	103	159	36	5 724
97	SP9DEM	86	126	45	5 670
98	3Z4ACC	94	130	43	5 590
99	SQ5NPF	102	114	49	5 586
100	SP1ZZ	94	128	42	5 376
101	SQ9LQ	93	117	43	5 031
102	SP5OAG	88	132	35	4 620
103	SP4KNA	69	109	42	4 578
104	SP5MBI	93	105	41	4 305
105	SP9ZE	99	110	39	4 290
106	SP2LQP	90	110	39	4 290
107	SP9MAN	106	122	35	4 270
108	SQ1RMM	82	104	39	4 056
109	SQ7OTH	91	101	39	3 939
110	SQ8MXE	81	95	40	3 800
111	SP1NVM	79	97	39	3 783
112	SP2ALT	91	105	35	3 675
113	SP3OKJ	76	94	38	3 572
114	SP9GKJ	63	87	41	3 567
115	SQ3LMY	72	96	37	3 552
116	SP8OBQ	66	90	39	3 510
117	SQ2RCM	66	92	36	3 312
118	SQ5FLQ	91	107	30	3 210
119	SP1XNA	57	93	34	3 162
120	SP5DDF	58	78	38	2 964
121	SP6TRX	60	86	30	2 580
122	SP9WLC	65	81	30	2 430
123	SQ9MEI	68	84	28	2 352
124	SQ2OSC	56	90	26	2 340
125	SQ1BHH	66	100	23	2 300
126	SP1JWY	56	68	33	2 244
127	SQ3JVH	66	82	27	2 214
128	SQ8RAY	53	73	29	2 117
129	SP6QNU	50	74	27	1 998
130	SQ5OVL	75	81	24	1 944
131	SP9FUC	34	80	21	1 680
132	SQ5ARG	39	87	19	1 653
133	SP5XOV	37	67	24	1 608
134	SQ1PTO	45	59	25	1 475
135	SQ4KJQ	53	58	25	1 450
136	SQ6STI	35	53	27	1 431
137	SQ6DGC	37	45	27	1 215
138	SQ9LOJ	38	46	21	966
139	SP1UJI	31	43	20	860
140	SQ8OGA	25	45	15	675
141	SP1ZP	33	33	19	627
142	SQ8NGV	19	35	17	595
143	SP4AUN	26	34	15	510
144	SQ5NWE	19	41	12	492
145	SQ6RDS/3	20	30	16	480
146	SQ7BFS	24	28	15	420
147	SP8DWI	24	24	14	336
148	SQ5AAG	16	22	9	198
149	SQ9IWR	10	12	8	96
150	SP1WSR	11	15	6	90
151	SQ6NSG	5	11	4	44
152	SQ9ORG	9	9	4	36
153	SQ7OTA	4	10	3	30

SO AB PHONE HP

1	SP6IXF	965	1691	175	295 925
---	--------	-----	------	-----	---------

2	SN8B	800	1433	141	202 053
3	SP9QMP	734	1350	148	199 800
4	SQ9HZM	659	951	141	134 091
5	SO7A	493	904	108	97 632
6	SP3PJY	489	742	102	75 684
7	SQ8JX	566	704	104	73 216
8	SN5V	472	686	98	67 228
9	SP1JNY	374	490	90	44 100
10	SQ9LR	318	484	81	39 204
11	SP7PTK	247	371	90	33 390
12	SP8TDV	210	352	82	28 864
13	SP5IVC	245	359	74	26 566
14	SN9P	217	319	81	25 839
15	SP2FTL	233	323	73	23 579
16	SP9NSY	242	332	69	22 908
17	SP9CLO	183	241	73	17 593
18	SP6SOX	162	230	66	15 180
19	SP5GMM	101	161	48	7 728
20	SQ9JKW	114	164	42	6 888
21	SQ2DMU	95	135	51	6 885
22	SP6OPY	84	124	52	6 448
23	SP3BVI	108	184	33	6 072
24	SQ8GBG	85	117	45	5 265
25	SP9UJR	94	118	42	4 956
26	SN4W	95	105	38	3 990
27	SP9GKO	71	85	25	2 125
28	SP7CDG	41	61	20	1 220
29	SP9NLX	36	48	19	912
30	SN2R	23	31	15	465
31	SP3IQ	3	5	3	15

SO AB CW LP

1	SN7Q	1 290	2110	200	422 000
2	SP3VT	1 128	1633	151	246 583
3	SP5CNA	989	1499	146	218 854
4	SQ1DWR	969	1414	143	202 202
5	SP9BNM	898	1234	156	192 504
6	SP1AEN	949	1287	148	190 476
7	SP3HLM	632	1019	141	143 679
8	SP9MZH	698	985	134	131 990
9	SQ3RX	745	1044	124	129 456
10	SP1PWP	718	1053	119	125 307
11	SP9DUX	647	916	118	108 088
12	SP3PL	550	852	125	106 500
13	SN9U	639	922	115	106 030
14	SP7OGP	555	787	121	95 227
15	SN5A	614	842	113	95 146
16	SP7IFM	611	881	107	94 267
17	SP5BMU	598	804	114	91 656
18	SP7BCA	543	751	107	80 357
19	SP5CGN	460	646	106	68 476
20	SQ3WW	423	661	89	58 829
21	SN5J	381	551	104	57 304
22	SP5UAF	454	630	89	56 070
23	SQ1EUG	505	629	85	53 465
24	SP6GJY	368	498	101	50 298
25	SP5GDY	390	528	95	50 160
26	SP8HWM	346	532	87	46 284
27	SP5IXI	388	485	91	44 135
28	SQ5JUP	329	451	91	41 041
29	SP6IHE	239	403	85	34 255
30	SQ1K	342	434	75	32 550
31	SQ9IDE	353	494	62	30 628
32	SP3HC	223	395	74	29 230
33	SP8AJK	297	439	66	28 974
34	SP2AVE	260	371	75	27 825
35	SP4GDC	233	413	65	26 845
36	SP9ERY	255	397	66	26 202
37	SP3BEJ	217	473	55	26 015
38	SO8T	311	406	63	25 578
39	SP2IW	214	345	70	24 150
40	SP5FHF	265	345	68	23 460
41	SP7EXJ	180	298	75	22 350
42	SP2IU	207	365	60	21 900
43	SP9IBJ	261	349	53	18 497
44	SP9GKM	212	278	62	17 236
45	SQ9CAQ	229	253	68	17 204

46	SP5GTI	130	248	63	15 624
47	SQ9BDN	138	306	43	13 158
48	SP9BWA	124	250	50	12 500
49	SQ8LUV	219	243	47	11 421
50	SP5ATO	129	233	48	11 184
51	SP4BOS	148	208	53	11 024
52	SP7FRO	136	226	40	9 040
53	SP7FGA	118	164	50	8 200
54	SP2KAE	129	154	40	6 160
55	SP5AHR	86	190	31	5 890
56	SN9R	96	195	30	5 850
57	SP5XOG	94	154	37	5 698
58	SP6BEN	76	158	36	5 688
59	SP9GPW	88	198	27	5 346
60	SN5B	86	155	32	4 960
61	SQ1EID	84	150	32	4 800
62	SP3GRQ	77	173	24	4 152
63	SP7MFR	48	82	40	3 280
64	SP9AJM	46	106	24	2 544
65	SP7MFQ	46	76	24	1 824
66	SP8LXE	33	65	24	1 560
67	SP6QKP	42	72	18	1 296
68	SP9ICU	55	63	19	1 197
69	SQ3VV	12	32	12	384

SO AB CW HP

1	SO6T	1 167	1865	169	315 185
2	SP1NY	1 150	1718	179	307 522
3	SN8F	1 132	1791	162	290 142
4	SP4BEU	989	1497	164	245 508
5	SP7HOV	850	1288	168	216 384
6	SP9JZU	905	1311	157	205 827
7	SP9ATE	845	1299	149	193 551
8	SN3C	852	1362	140	190 680
9	SP9GR	857	1135	140	158 900
10	SP3MGM	806	1154	135	155 790
11	SP2FGO	688	987	121	119 427
12	SO2W	609	1039	112	116 368
13	SP8GSC	589	771	106	81 726
14	SN2M	523	718	91	65 338
15	SO100MSC	434	603	82	49 446
16	SP9CCA	259	457	77	35 189
17	SP9PSB	296	422	79	33 338
18	SP2GJV	294	454	63	28 602
19	SP2HPM	292	366	65	23 790
20	HF800Z	264	351	65	22 815
21	SP6JEV	161	257	65	16 705
22	SP9CUX	122	218	47	10 246
23	SQ7B	131	197	52	10 244
24	SP2B	108	164	41	6 724
25	SP9VJ	75	175	33	5 775
26	SP2BLC	130	140	39	5 460
27	SP2PAQ	110	130	30	3 900
28	SP2EOP	52	80	17	1 360

SO AB MIXED QRP

1	SP9NSV/7	713	1015	132	133 980
2	SO2D	403	631	106	66 886
3	SP5LM	380	560	116	64 960
4	SP6EIJ	417	519	91	47 229
5	SP4JFR	394	490	78	38 220
6	SP6LV	345	459	83	38 097
7	SP2FWF	230	343	77	26 411
8	SP3MKS	213	331	68	22 508
9	SQ2DYF	227	291	74	21 534
10	SP1FPG	192	262	75	19 650
11	SP8XXN	191	257	71	18 247
12	SP6BXM	286	352	46	16 192
13	SP7EWD	167	281	57	16 017
14	SQ3OGP	107	163	39	6 357
15	SP3VZY	108	156	38	5 928
16	SP7MJL	112	144	26	3 744
17	SP9NLI	67	109	34	3 706
18	SP9RQH	63	95	29	2 755
19	SQ8MFB	49	51	26	1 326
20	SP2DWA	24	68	10	680

21	SQ5LNU	32	14	12	168
22	SQ2DYL	13	13	9	117
23	SP8QED	9	13	7	91
24	SP7SZC	8	12	7	84

16	SP1MWK	62	136	29	3 944
17	SP4BY	52	110	25	2 750
18	SP6MLT	11	6	6	36

SO AB MIXED LP

1	SQ9UM	1 175	1757	174	305 718
2	SP5EOT	823	1143	140	160 020
3	SO9G	740	1100	136	149 600
4	SQ5STS	721	969	139	134 691
5	SP2DNI	745	963	128	123 264
6	SP2GMA	777	1057	113	119 441
7	SP3ZIR	506	723	112	80 976
8	SP6ARE	410	604	101	61 004
9	SP4GHL	322	470	108	50 760
10	SP5GRM	399	679	66	44 814
11	SP8CGU	303	505	80	40 400
12	SO8O	330	466	83	38 678
13	SP7QHR	246	462	80	36 960
14	SO7L	255	333	88	29 304
15	SP9OHY	275	535	52	27 820
16	SP7AWG	205	343	80	27 440
17	SP9OHL	176	304	85	25 840
18	SP4AAZ	208	336	75	25 200
19	SP5XSL	230	323	78	25 194
20	SP5BWO	242	346	64	22 144
21	SP4AVG	228	290	75	21 750
22	SP6A	273	329	61	20 069
23	SQ9DXN	157	287	65	18 655
24	SP3PSM	244	276	63	17 388
25	SP6IXU	148	290	54	15 660
26	SQ6LJV	149	295	51	15 045
27	SQ7LQJ	160	238	61	14 518
28	SP5ICS	146	262	54	14 148
29	SP6TGI	158	244	55	13 420
30	SP5BB	133	219	59	12 921
31	SQ7NSP	134	206	61	12 566
32	SQ9MZ	153	231	50	11 550
33	SQ5ESM	158	186	60	11 160
34	SP2BHM	143	227	49	11 123
35	SP9BGS	105	230	48	11 040
36	SP5BTN	125	207	48	9 936
37	SP2FMN	134	210	43	9 030
38	SP5HFS	101	146	56	8 176
39	SP3NYR	119	163	47	7 661
40	SP7HT	77	207	36	7 452
41	SP3CCT	164	176	40	7 040
42	SP2HFH	85	169	39	6 591
43	SP9AUV	93	143	46	6 578
44	SN5O	83	166	37	6 142
45	SQ8MFM	95	127	46	5 842
46	SP5OXJ	108	140	40	5 600
47	SQ8LEC	104	162	32	5 184
48	SQ3HTX	88	138	32	4 416
49	SP3KPN	90	94	27	2 538
50	SP9FOW	54	76	25	1 900
51	SP9HQI	46	66	23	1 518
52	SO4R	56	58	25	1 450
53	SP9DIT	40	50	27	1 350

SO AB MIXED HP

1	SO6I	1 265	1832	168	307 776
2	SP5WA	896	1422	154	218 988
3	SP5ELA	913	1323	141	186 543
4	SN2Q	759	1248	134	167 232
5	SP3DOF	851	1209	132	159 588
6	SP9LAS	820	1145	135	154 575
7	SP5LS	517	873	120	104 760
8	SN9N	325	431	88	37 928
9	SO8A	335	525	70	36 750
10	SP8HXN	187	297	65	19 305
11	SP1MVW	129	223	52	11 596
12	SQ2LKM	132	142	52	7 384
13	SP8DHJ	91	131	50	6 550
14	SP9OZY	78	132	45	5 940
15	SP3JHY	97	133	39	5 187

SO TB MIXED

1	SN8R	1 222	1844	129	237 876	
80M 40M 20M	2	SP2QG	1 150	1568	132	206 976
80M 40M 20M	3	SP8FHM	1 112	1488	119	177 072
80M 40M 20M	4	SP7HKK	982	1326	130	172 380
80M 40M 20M	5	SP1DSZ	721	1325	116	153 700
40M 20M 15M	6	SP7JOA	766	1017	115	116 955
80M 40M 20M	7	SN2Z	696	974	117	113 958
80M 40M 20M	8	SP5ES	614	776	95	73 720
80M 40M 20M	9	SP5MXZ	473	712	81	57 672
40M 20M 15M	10	SP5ELW	381	653	87	56 811
80M 20M 15M	11	SQ4JEN	429	555	92	51 060
80M 40M 20M	12	SP7FBQ	364	526	75	39 450
40M 20M 15M	13	SP2GCI	302	490	79	38 710
40M 20M 15M	14	SP9DTH	356	539	65	35 035
40M 20M 15M	15	SP9HZW	284	500	69	34 500
40M 20M 15M	16	SP8HPW	222	366	65	23 790
40M 20M 15M	17	SP6JQC	312	421	53	22 313
40M 15M 10M	18	SP9CLU	202	262	67	17 554
80M 40M 20M	19	SP9COO	218	270	65	17 550
80M 40M 20M	20	SP9CXN	202	240	65	15 600
80M 40M 20M	21	SO2F	173	275	56	15 400
80M 20M 15M	22	SP6FJ	140	224	52	11 648
40M 20M 15M	23	SN4F	154	266	43	11 438
20M 15M 10M	24	SP2OFR	156	182	59	10 738
80M 40M 20M	25	SP7SZW	129	181	50	9 050
40M 20M 15M	26	SP3GHK	149	204	44	8 976
40M 20M 15M	27	SP3EA	123	143	57	8 151
160M 80M 40M	28	SP2RIQ	130	178	43	7 654
40M 20M 15M	29	SN0N7W	134	172	44	7 568
80M 40M 20M	30	SP2IWK	122	150	50	7 500
80M 40M 20M	31	SP3SL	122	252	29	7 308
20M 15M	32	SP9RHN	137	169	43	7 267
40M 20M 15M	33	SQ3OOB	132	154	44	6 776
80M 20M	34	SP8BQL	93	177	37	6 549
20M 15M 10M	35	SP3HTF	93	141	42	5 922
40M 20M 15M						

36	SQ7OWP	103	131	42	5 502
80M 40M 20M					
37	SP6FXV	80	160	34	5 440
40M 20M 15M					
38	SQ3MZM	113	137	39	5 343
40M 20M					
39	SP9RVP	86	128	41	5 248
40M 20M 15M					
40	SP9ODM	102	116	42	4 872
80M 40M 20M					
41	SP3GAX	98	172	28	4 816
20M 15M 10M					
42	SQ8MXJ	100	114	41	4 674
80M 40M 20M					
43	SP8BOZ	87	105	43	4 515
80M 40M 20M					
44	SQ7FPQ	79	143	30	4 290
20M 15M 10M					
45	SP6OWY	55	117	34	3 978
40M 20M 15M					
46	SP9TTT	73	109	33	3 597
40M 20M 15M					
47	SP8SRS	72	130	27	3 510
20M 15M 10M					
48	SP1BLE	60	144	23	3 312
20M 15M					
49	SP3SWJ	73	85	37	3 145
80M 40M 20M					
50	SQ6OR	55	109	25	2 725
40M 20M 15M					
51	SP3DVG	71	85	32	2 720
80M 40M 20M					
52	SP9PPP	55	85	31	2 635
40M 20M 15M					
53	SP9GLJ	59	67	32	2 144
80M 40M 20M					
54	SP3CMX	46	100	21	2 100
20M 15M 10M					
55	SP9FRZ	54	58	34	1 972
80M 40M 20M					
56	SQ9IWS	42	74	26	1 924
80M 40M 15M					
57	SQ3EV	55	61	31	1 891
80M 40M 20M					
58	SP2BMW	70	72	26	1 872
80M 40M					
59	SP7QPG	48	66	27	1 782
40M 20M 15M					
60	SP2HNL	54	70	25	1 750
40M 20M 15M					
61	SN9Y	43	75	21	1 575
20M 15M 10M					

62	SP2OFF	48	57	22	1 254
40M 20M					
63	SQ6MIZ	45	51	24	1 224
80M 40M 20M					
64	SP9KJ	35	53	19	1 007
20M 10M					
65	SQ6NCZ	27	39	12	468
20M 15M					
66	SP8WQX	19	18	13	234
80M 40M 20M					
67	SQ9JKG	9	27	8	216
20M 15M					
68	SQ9AOL	16	20	9	180
40M 20M 15M					
69	SQ9NKR	8	24	7	168
20M 15M					
70	SP6IEQ	5	13	5	65
15M					

MO AB MIXED

1	SN3R	1 621	2807	210	589 470
2	SP6Yaq	1 131	2173	194	421 562
3	SN9V	1 187	1958	177	346 566
4	SN9W	1 235	1970	175	344 750
5	SP9KDA	1 335	1827	165	301 455
6	SP9PZD	892	1768	156	275 808
7	SP2KPD	1 000	1496	146	218 416
8	SP6ZDA	908	1284	145	186 180
9	SN7H	745	1103	132	145 596
10	SP9KAT	554	834	133	110 922
11	SO3RM/1	734	867	112	97 104
12	SP1KRF	648	873	105	91 665
13	SP5ZIM	511	696	121	84 216
14	SN9F	429	617	112	69 104
15	SN5T	401	555	115	63 825
16	SN9K	419	561	95	53 295
17	SP9PEX	281	423	91	38 493
18	SP1KV	343	463	67	31 021
19	SN1D	250	358	72	25 776
20	SP4PBI	228	358	69	24 702
21	SP6PYP	198	286	81	23 166
22	SP6PZG	208	344	63	21 672
23	SP8ZBX	237	295	69	20 355
24	SP2PMK	197	227	67	15 209
25	SP2ZFT	143	216	43	9 288
26	SP6PLH	81	97	36	3 492
27	SP9PTA	66	111	22	2 442
28	SP1KZE	63	97	25	2 425
29	SP8KEA	29	51	14	714
30	SP9PKM	20	22	15	330

OPERATORS OF MOAB MIXED STATIONS:

- A61ZX:** A61ZX, A61AB, A61BM
- DL0FTL:** DL2DRM DH5ABC
- LZ4UU:** LZ2PS, LZ4UU
- OK2KYC:** OK2AIA, OK2BUC, OK2MBO, OK2MBP
- PG2AA:** PG2AA, NL9554
- S59T:** no data
- SK7OA:** SG7A, SM7LXV
- RN3F:** RK3AW, RK3FM, RW3F
- RZ4FWW:** UA4-677-148, RK4FL, RO4F
- RK4HYT:** RA4HBS, R4H-40, R4H-31
- RK2FXB:** PETROVA ELENA, PETRIOV VLAD
- RK9Q:** RW9QA, RW9QC, UA9QFF
- RK9SWF:** RA9SG, RW9TA, RA9ST
- RK9CYA:** RK9CR, UA9CMP
- UN8LWF:** UN7LZ, UN9LAB, UN7LAA
- UW3E:** USE-073, US6EX, UV5EOZ
- UR4PWC:** US-P-369, UT4PZ
- UT1KWA:** UT1KY, UT5KDS, Aleksandr
- UX8IXX:** UX8IX, US8IDX

- YR2X:** YO2LEA, YO2MIA, YO2LGV
- SN3R:** SP3HRN, SQ6NTM
- SP6Yaq:** SP5Hnk, SQ8MZW, SQ6ILS, SQ6NEF, SQ6MS
- SN9V:** SP9GFI, SP9NWN, SQ9CIE
- SN9W:** SP9UML, SP9CCD, SP9JZT, SP9JQA, SP9HVV
- SP9KDA:** SP6GCU, SP6QJG, SP9LJE, SP6MQO, SP6-8522
- SP9PZD:** SQ9PM, SP9LJD, SP9IKF
- SP2KPD:** SP2IJ, SP2DKI
- SP6ZDA:** no data
- SN7H:** SQ7MZH, SQ7LRT, SQ7NNL, SQ7IQM, SP7Q
- SP9KAT:** SQ9BDV, SP9OUV, SP9FV, SP9BXU, SP9BFC, SQ9JXE, SP9HQI
- SO3RM/1:** DL2JRM, DL5SE
- SP1KRF:** Maciek, SP1IVL, SQ1DWS
- SP5ZIM:** SP5VYI, SP5GRU
- SN9F:** SP9EMI, SP9HML
- SN5T:** SQ5ABF, SQ5ABG
- SN9K:** SP9MDY, SP9-31018
- SP9PEX:** SP9HXA, SP9TTX, SQ9NKK
- SP1KV:** no data

SN1D: SP1RKT, SP1GZF
SP4PBI: SP4Z, SP4INT
SP6PYP: SP6AAT, SQ6PMA, SQ6PWJ
SP6PZG: no data
SP8ZBX: SP8NFZ, SQ8NGV
SP2PMK: SP2MSF, SP2IMB, SP2UKX

SP2ZFT: SP2BRI, SP2FAV
SP6PLH: no data
SP9PTA: SP9LAS, SP9IEK
SP1KZE: SP1MWN
SP8KEA: SP8LZC, SP8CIE
SP9PKM: SQ9JKW

OPERATORS OF CONTEST AND SPECIAL EVENT STATIONS:

4O3A: YU1YV	SN2Z: SP2JNK	SO2O: SQ2GXO
4X0A: 4X1VF	SN3C: SP3ASN	SO2W: SP2GWH
8S0C: SM0MPV	SN3Q: SP3FLQ	SO4P: SP4DEU
8S6A: SM6DPF	SN3S: SQ3LVO	SO5D: SP5DZC
9K2HN: SP4R	SN3X: SP3SLA	SO5S: SP5SS
CR5BWW: CT1BWW	SN4F: SP4TKO	SO6C: SP6CIK
DM3F: DH5FS	SN4W: SP4ICP	SO6I: SP6JIU
HF800Z: SP6CES	SN5A: SP5AZN	SO6T: SP6T
HG30LP: HG0LP	SN5B: SP5SSB	SO7A: SP7MOC
HG6C: HA6IAM	SN5J: SP5JXK	SO7L: SP7UWL
HG8C: HA8EK	SN5N: SP5KP	SO7O: SP7DQR
HS0AC: HS0/OZ1HET	SN5O: SP5BYC	SO8A: SP8BRQ
SA1A: SM1TDE	SN5V: SQ5EBM	SO8L: SQ8JLU
SD3A: SM3FJF	SN5Y: SQ5WAA	SO8N: SP8HZZ
SE6N: SA6AXR	SN7A: SP7MOA	SO8O: SP8AJC
SE6Y: SM6DED	SN7F: SP7LFT	SO8R: SQ8JLA
SE7A: SM7YII	SN7O: SP7IVO	SO8T: SP8TJU
SF3A: SM3CER	SN7Q: SP7GIQ	SO9D: SP9DLY
SF5X: SM5EFX	SN7S: SP7IDX	SO9G: SP9DTE
SI3A: SM3LIV	SN8B: SP8CUR	SO100MSC: SP2FAP
SI5S: SM5NVF	SN8F: SP8FHK	SP0PZK: SP5JTF
SI5Y: SM5BKK	SN8L: SQ8JCB	SP3ZIR: SQ3JPV
SK6HD: SM5BKK	SN8M: SP8MI	TA7/KM8W: R5GA
SM0A: SM0AIG	SN8Q: SP8IMG	TM0X: F4BKV
SM0Q: SM0OQG	SN8R: SP8ONZ	US5E: UR7EQ
SM6V: SM6VAO	SN9L: SQ9NIS	UT3L: UR5LO
SM6Z: SM6BZE	SN9N: SQ9ZM	UT3N: UT3NK
SN1A: SP1EG	SN9P: SQ9GAI	UT8L: UY5LQ
SN1C: SP1RFC	SN9R: SP9BRP	UU1K: UU0JM
SN1J: SP1MWF	SN9U: SP9UMJ	UW2F: UT0FT
SN1T: SQ1RET	SN9Y: SP9UOP	UZ0U: UY5ZZ
SN1Z: SQ1EIX	SN9Z: SP6EQZ	UZ2L: US4LS
SN2M: SP2XF	SO1D: SP1JPQ	YQ5Q: YO5OHO
SN2Q: SP2HYO	SO2D: SP2IKP	YT9M: YU1PJ
SN2R: SP2QCR	SO2F: SP2CNW	YU5T: YU1JU

CHECKLOGS:

BX4AD, DC2IP, DF7GG, DL2BIS, DL2MDU, DL7USW/P, DL9NO, DM5DX, DJ5MW, DL2VRL, DL7SLB, EA3BJM, EI9JF, EW6GF, F1LPN, M0RTI, M0CKX, 2E0CNL, 2E0EET, G4GIR, HA2ERO, HA8TP, JK6MQC, K8BZ, LA7NFA, LU1FM, LY2CO, LZ1ONK, LZ9W, MM0BHX, OE5FZO, OH6GAW, OH8US, OK4MM, OM3RM, OO9O, ON3CYV, PA0RBO, PY5/SQ7FPH, 8S0C, SN3Q, SN5Y, SN7A, SN7F, SO5S, SO7O, SP2CWO, SP2DDX, SP2EXE, SP2QCU, SP2WGB, SP3CYY, SP3IC, SP3J, SP3LD, SP4LX, SP4Z, SP5CIB, SP5DDJ, SP5GQX, SP5IKC, SP6CZ, SP6EF, SP6PCM, SP6TRO, SP6VWC, SP7EWL, SP7GXX, SP7JKX, SP7LIE, SP7OMS, SP7SP, SP7TEV/7, SP8EEX, SP8GEY, SP8KPK, SP8MFW, SP9CIH, SP9H, SP9IHP, SP9VOU, SQ1BVG, SQ1OHK, SQ4HRN, SQ6CU, SQ9IAL, SP3JWG, SP6FEK, SP5LCG, SP3FUK, SP9CTW, SP7KDJ, SQ6LAW, SP6BFK, SP5AHY, SP5NVX, SP9MDY, SQ5OMO, SQ6ODD, SQ9E, TA2ACK, R3GM, RK3SWB, RU3SD, UA3OQ, RW3YW, R2SA, RA2FN, R0JY, R9YQ, RU9YF, RZ9OC, RM8D, RZ9CJ, UR4WWT, UR7QM, US0HZ, UX0IK, UX1IL, VU2NXM, YO4AB, YO5PBF.

WSPÓŁZAWODNICTWO ODDZIAŁÓW TERENOWYCH PZK (POLISH STATIONS ONLY):

W latach 80. w SP DX Contest było prowadzone współzawodnictwo Oddziałów PZK. Od tego roku powracamy do publikowania wyników poszczególnych Oddziałów Terenowych PZK. Wynik Oddziału Terenowego jest wyliczony jako tzw. współczynnik aktywności pomnożony przez sumę punktów (sumę wyników końcowych) zdobytych w zawodach przez członków danego oddziału. Współczynnik aktywności będzie wyliczany jako liczba członków danego OT, którzy wystartowali w zawodach podzielona przez ogólną liczbę członków danego OT.

Oddział (OT-52) z najwyższym wynikiem otrzymuje puchar ufundowany przez Prezesa PZK. Ponadto wśród uczestników z pięciu Oddziałów Terenowych PZK z najwyższymi wynikami rozlosowane zostały nagrody: 15 sztuk Krótkofalarskich Map Świata ufundowanych przez Bartka SQ1K (QLSHOP.pl) oraz SP DX Club.

W obliczaniu wyników współzawodnictwa brane były pod uwagę tylko wyniki osiągnięte przez stacje pracujące z Polski, ale już w wyliczeniu współczynnika uwzględniani byli także członkowie PZK pracujący spoza granic Polski (np. SP4R pracujący z 9K2HN, SP7ASZ pracujący jako PY5/SP7ASZ, SP7VC pracujący jako HB0/SP7VC itd.).

Krótkofalarskie mapy świata otrzymują następujący krótkofalowcy wylosowani spośród uczestników zawodów z oddziałów 52, 26, 18, 22, 17 (w nawiasie numer oddziału): SQ4CTS (17), SP8MFW (18), SP2OFR (26), SP1JWY (22), SP5XXX (52), SP4-208 (17), SP2B (26), SP2GWH (26), SP2HGV (26), SP4HXS (17), SP5LCS (52), SQ1BVG (22), SQ1EID (22), SP1UJI (22), SQ8JLU (18)

Wyniki Oddziałów PZK przedstawiają się następująco:

Lp	Nr OT	Nazwa OT	Wynik OT	Ilość startujących	Ilość członków OT	Suma punktów	Współczynnik
1	52	Wirtualny OT PZK	529 332.38	31	63	1 075 740	0.4921
2	26	PZK Oddział w Toruniu	335 060.15	40	131	1 097 322	0.3053
3	18	PZK - OT nr 18 w Rzeszowie	219 079.42	18	76	925 002	0.2368
4	22	Środkowopomorski Oddział PZK w Koszalinie	180 764.54	21	91	783 313	0.2308
5	17	PZK OT Białystok	168 945.82	31	141	768 431	0.2199
6	25	Warszawski OT PZK	164 996.46	41	260	1 046 319	0.1577
7	01	PZK Dolnośląski OT	161 556.27	38	287	1 220 175	0.1324
8	20	Lubelski OT PZK	161 500.87	38	174	739 504	0.2184
9	28	OT PZK nr 28 w Tarnowie	143 718.40	28	75	384 960	0.3733
10	14	Zachodniopomorski OT PZK w Szczecinie	141 188.64	32	186	820 659	0.1720
11	06	Śląski OT PZK w Katowicach	138 041.39	36	207	793 738	0.1739
12	51	Staropolski OT OT-51 w Ostrowcu Świętokrzyskim	124 499.54	27	117	539 498	0.2308
13	10	Małopolskie Stowarzyszenie Krótkofalowców OT PZK	113 983.14	18	121	766 220	0.1488
14	15	Łódzki OT PZK	110 687.61	28	248	980 376	0.1129
15	50	PZK Gliwicki OT	104 194.08	13	71	569 060	0.1831
16	03	Świętokrzyski Oddział PZK w Kielcach	103 519.19	21	68	335 205	0.3088
17	31	Rybnicki OT PZK	99 685.44	20	114	568 207	0.1754
18	32	PZK Lubuski Oddział PZK	86 231.63	15	98	563 380	0.1531
19	08	PZK Oddział Poznański	81 986.75	25	134	439 449	0.1866
20	21	Olsztyński Oddział PZK	73 283.45	16	102	467 182	0.1569
21	04	Bydgoski Oddział PZK - OT-04	72 517.70	29	172	430 105	0.1686
22	23	Oddział Nadnotecki PZK w Pile	41 568.21	13	119	380 509	0.1092
23	05	PZK Oddział Podkarpacki OT05 Krosno	38 265.17	23	101	168 034	0.2277
24	09	Pomorski OT PZK	37 786.61	18	160	335 881	0.1125
25	24	Skierniewicki OT nr 24 PZK	36 895.43	4	35	322 835	0.1143
26	29	Górnośląski OT PZK	32 085.52	15	58	124 064	0.2586
27	13	Sudecki OT PZK	27 528.18	20	137	188 568	0.1460
28	11	PZK, OT nr 11 w Opolu	23 971.42	13	112	206 523	0.1161
29	27	OT Południowej Wielkopolski nr 27	21 785.57	16	117	159 307	0.1368
30	12	OT PZK przy Dowódstwie 2 Korpusu Zmechanizowanego w Krakowie	16 355.81	8	84	171 736	0.0952
31	16	Żuławski Oddział Terenowy Polskiego Związku Krótkofalowców	14 146,32	8	62	109 634	0,1290
32	37	Praski Oddział Terenowy PZK	10 740,52	11	151	147 438	0,0728
33	35	Jarosławski Oddział Terenowy Polskiego Związku Krótkofalowców - OT-35	366,80	1	30	11 004	0,0333

Znaki uczestników zawodów z pięciu najaktywniejszych oddziałów:

OT-52: SP3SWJ, SP4-21-199, SP4-21-201, SP5-25-0758, SP5AUC, SP5AUU, SP5BMP, SP5BTN, SP5CIB, SP5DDF, SP5DDJ, SP5ELA, SP5ELW, SP5EOT, SP5ES, SP5FKW, SP5GRM, SP5GTI, SP5IXI, SP5LCG, SP5LCS, SP5LM, SP5MXZ, SP5OXE, SP5OXJ, SP5UAF, SP5UGP, SP5WA, SP5XXX, SQ5OUO, SQ5WAA .

OT-26: SP2B, SP2BHM, SP2BMW, SP2BMX, SP2DWA, SP2EFU, SP2EPV, SP2EUI, SP2FMN, SP2FNS, SP2FUD, SP2FWF, SP2GCJ, SP2GJV, SP2GMA, SP2GWH, SP2HGV, SP2HWW, SP2HYO, SP2IKP, SP2ILQ, SP2IQN, SP2JLR, SP2JNK, SP2OFF, SP2OFP, SP2OFR, SP2SWA, SP2XF, SQ2BNM, SQ2DMU, SQ2DMX, SQ2EAN, SQ2JAM, SQ2LKM, SQ2OMB, SQ2OMG, SQ2OSE, SQ2RCM, SQ3HLB.

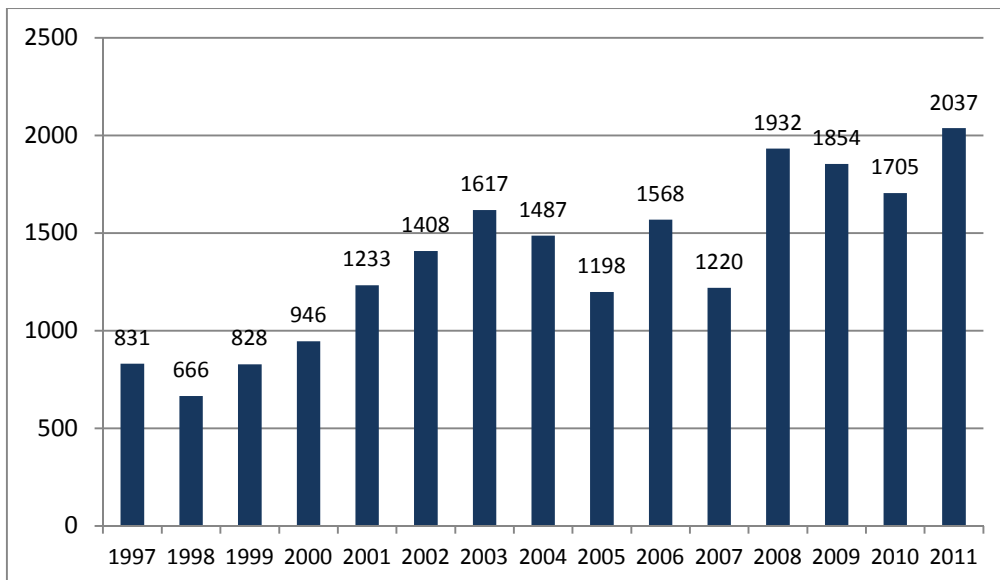
OT-18: SP8AJK, SP8BRQ, SP8CGU, SP8CUR, SP8FHK, SP8FHM, SP8JMA, SP8MFW, SP8TJU, SQ8JLA, SQ8JLU, SQ8JMZ, SQ8JX, SQ8LEC, SQ8LSC, SQ8MXJ, SQ8OGA, SQ8OGC.

OT-22: SP1AEN, SP1APZ, SP1BLE, SP1DMD, SP1GZF, SP1II, SP1JON, SP1JWY, SP1NQN, SP1NY, SP1RKR, SP1RKT, SP1UJI, SP9DTE, SQ1BVG, SQ1EID, SQ1EIX, SQ1GPR, SQ1K, SQ1OD, SQ1RMM.

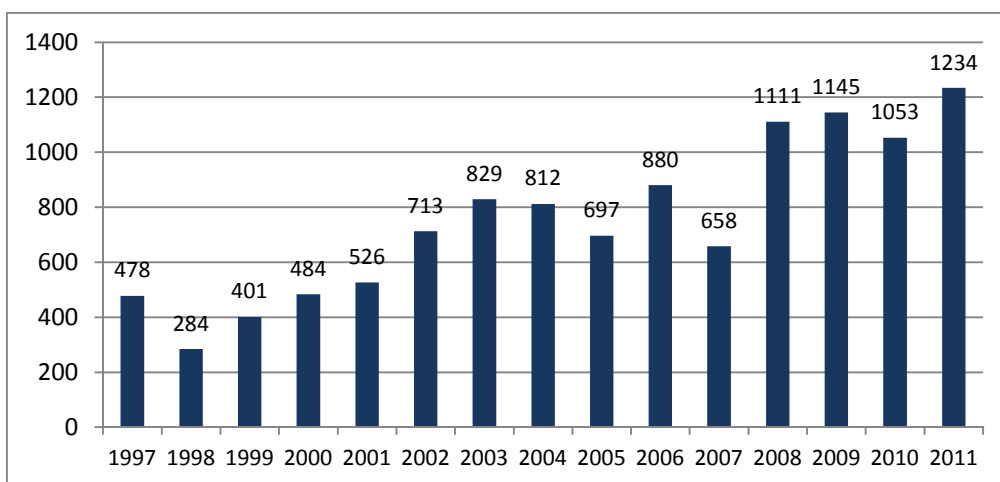
OT-17: SP4-208, SP4AUN, SP4AWE, SP4CGJ, SP4DNX, SP4ELN, SP4FCP, SP4FKS, SP4FMD, SP4GFG, SP4GHL, SP4HXS, SP4HXV, SP4ICD, SP4INT, SP4JCQ, SP4LVK, SP4LX, SP4NKJ, SP4NKS, SP4R, SP4SAF, SP4TBM, SP4Z, SP5XO, SQ4CTS, SQ4G, SQ4JEN, SQ4KJQ, SQ4O, SQ4RCU.

STATISTICAL DATA

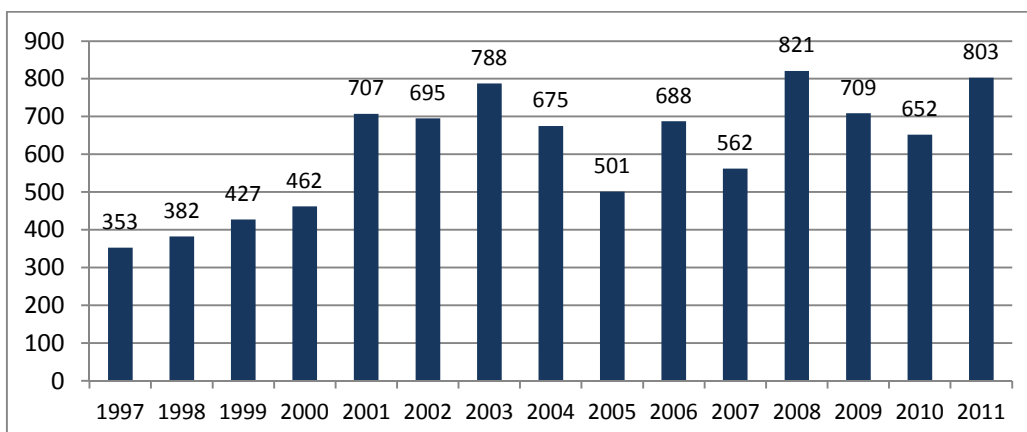
Number of participants by years



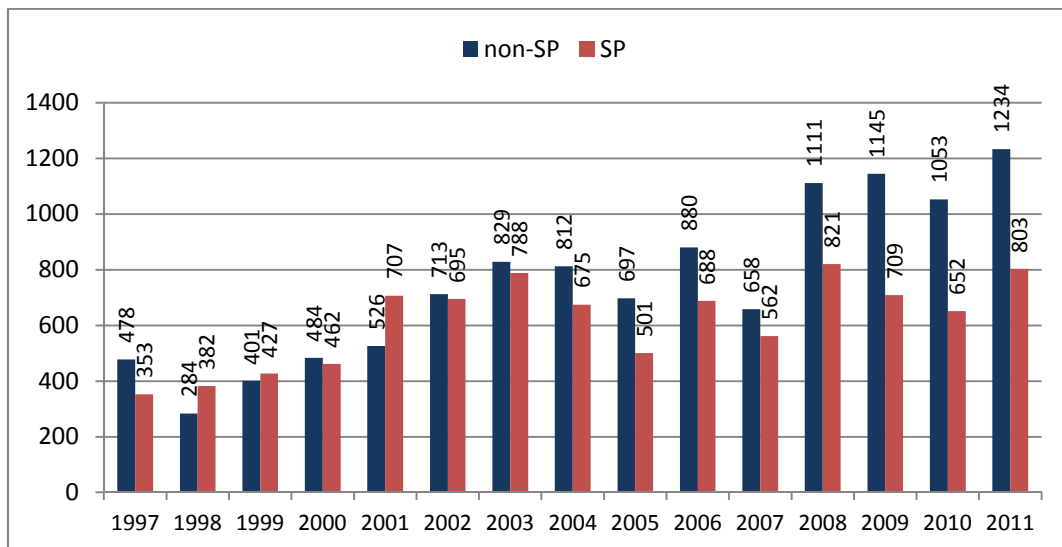
Number of participants by years (without Poland)



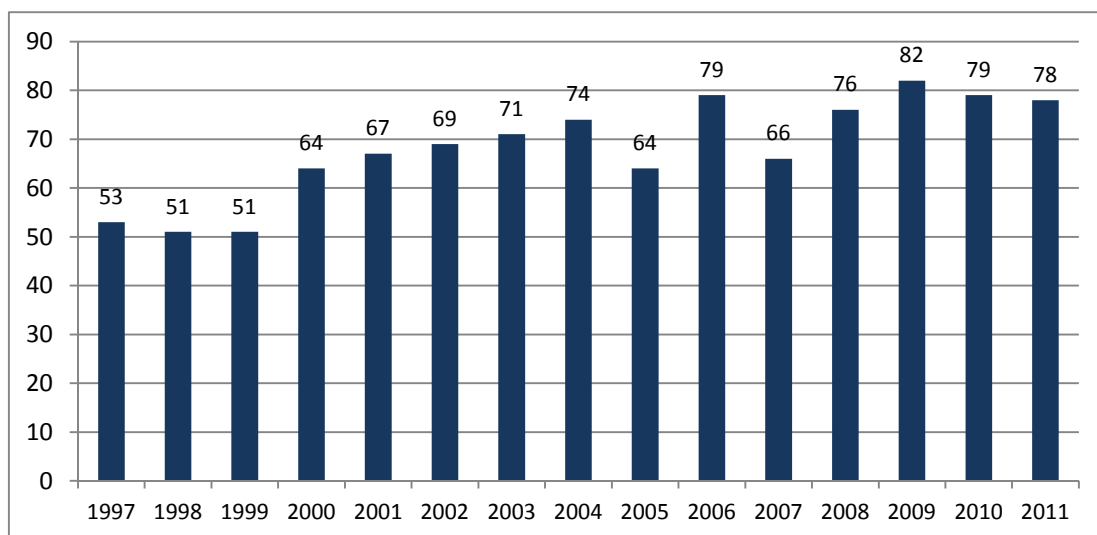
Number of participants by years – Polish stations only



Number of participants by years: SP and non-SP stations. Comparison



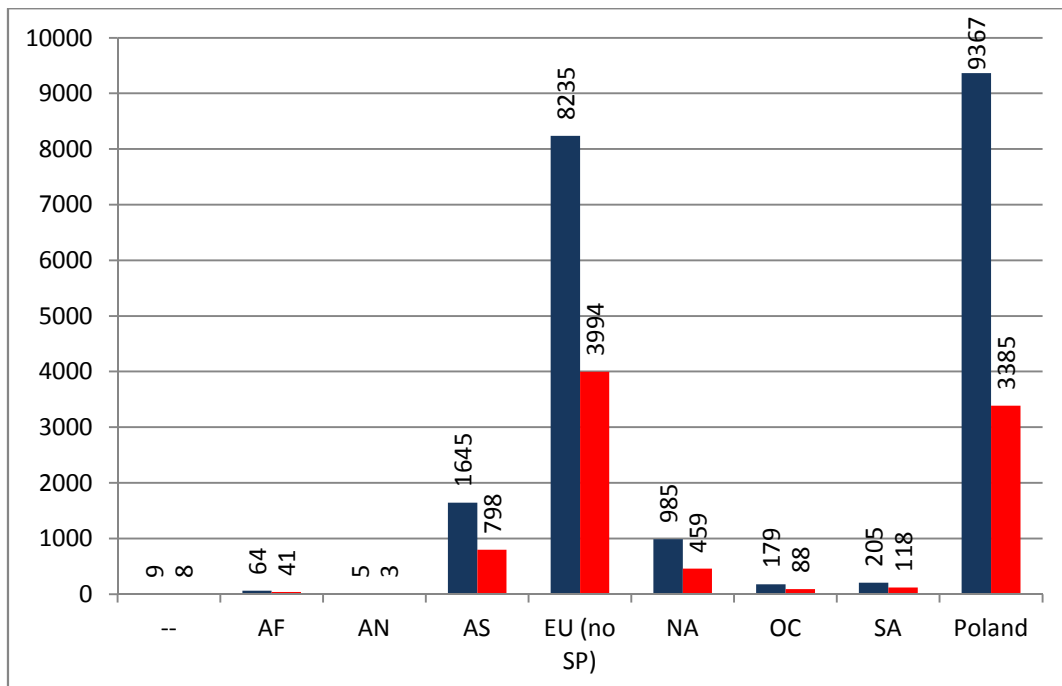
Number of DXCC/WAE entities represented in the SP DX Contest by years



Number of participants by continents (years 1997 – 2011)

This chart presents number of participants counted together for years 1997 – 2011. Polish stations are counted separately and are not included in the number counted for Europe (EU). The first number described as "--" means Maritime Mobile stations - in these cases it was impossible to determine the continent and we always classify these stations as a separate "entity".

On this chart dark blue columns represent total numbers of participants while red columns represent the number of distinct calls. As you can see from this comparison the SP DX Contest has many faithful friends.



Continental records

Please have a look at the continental records in the SP DX Contest. This data is counted based on SP DX Contest results since 1997, when there was a major change in SP DX Contest rules (in previous years CW and SSB parts were separated). Additionally in 1999 there was a change in the number of districts in Poland (województwa/voyevodships) from 49 down to 16 nowadays. For the all time records to be comparative, we've included results of Polish stations since 1997 and stations from abroad since 1999. We present top ten scores from each continent/category (in some categories there were less than 10 stations).

Data placed in columns: place, call, number of QSOs, QSO points, multiplier, final score, year when the record was set.

AFRICA

MO AB MIXED

1	3V8SQ	59	177	25	4425	2003
---	-------	----	-----	----	------	------

SO AB MIXED HP

1	9G5LF	585	1755	59	103545	2006
2	5U7B	1	3	1	3	2006

SO AB MIXED LP

1	CT3EE	154	462	21	9702	2004
2	ST2R	63	189	18	3402	2007
3	3B8/SP2JMB	29	87	26	2262	2008
4	CT3EE	40	120	18	2160	2005
5	EA8BQM	10	30	6	180	2009

SO TB MIXED

1	EA8AVK	273	819	43	35217	2011
2	EA8ASJ	162	486	47	22842	2005
3	EC8ADW	202	603	23	13869	2008
4	ZS6RQM	39	117	24	2808	2008
5	ZS2BBG	29	87	22	1914	2004
6	ZS6RQM	20	60	15	900	2010

SO AB PHONE LP

1	CN8YE	106	318	23	7314	2009
2	CN8YE	81	243	30	7290	2011
3	EA8CVW	53	159	27	4293	2011
4	6W7RV	13	39	10	390	2011

SO AB CW HP

1	EA8MQ	253	759	61	46299	2008
---	-------	-----	-----	----	-------	------

SO AB CW LP

1	EA8BEX	264	792	63	49896	2008
2	CN8YR	122	366	40	14640	2011
3	CT9/DL3KWR	157	471	30	14130	2011
4	EA8BEX	107	321	44	14124	2007
5	V51YJ	101	303	37	11211	2010
6	3B9/SP2JMB	78	234	38	8892	2009
7	CN8YR	62	186	35	6510	2010
8	J28AA	66	198	25	4950	2010
9	ZS6MG	50	150	29	4350	2004

10	J2800	17	51	12	612	2008
----	-------	----	----	----	-----	------

SO 40M PHONE

1	3B9/SP2JMR	18	54	10	540	2009
---	------------	----	----	----	-----	------

SO 20M PHONE

1	EC8ADW	122	366	16	5856	2007
2	CT3EE	64	192	15	2880	2006
3	CN8YE	42	126	14	1764	2008
4	CN8YE	36	108	12	1296	2007
5	ZS6RQM	30	90	12	1080	2009
6	ZS1SR	2	6	2	12	2006

SO 15M PHONE

1	EC8ADW	96	288	16	4608	2006
2	3XY1L	87	261	16	4176	2003

SO 10M PHONE

1	J28LP	113	333	16	5328	2001
---	-------	-----	-----	----	------	------

SO 40M CW

1	3B8MM	61	183	16	2928	2006
---	-------	----	-----	----	------	------

SO 20M CW

1	EA8AVK	129	387	16	6192	2010
2	SU9NC	126	378	16	6048	2008
3	CT9/DL3KWF	94	282	16	4512	2010
4	EA8AVK	66	198	15	2970	2008

SO 15M CW

1	EA8/SM6X	53	159	14	2226	2003
2	CT9/DL3KWR	31	93	12	1116	2010

SO 10M CW

1	C56TA	50	150	16	2400	2003
2	CT9/DL3KWF	53	159	13	2067	2011

SWL MIXED

1	5A/US-M-555	279	837	60	50220	2001
---	-------------	-----	-----	----	-------	------

ANTARCTICA

SO 20M CW

1	R1ANT	9	27	7	189	2005
---	-------	---	----	---	-----	------

SO 10M CW

1	DP1POL	110	330	16	5280	2003
---	--------	-----	-----	----	------	------

ASIA

MO AB MIXED

1	RT9W	1356	4068	94	382392	2002
2	RF9C	1339	4017	95	381615	2002
3	RT9W	1313	3831	93	356283	2001
4	RT9W	1247	3741	92	344172	2003
5	RT9W	1034	3102	81	251262	2004
6	RT9W	982	2946	76	223896	2006
7	RF9C	922	2766	76	210216	2003
8	RT9W	882	2646	79	209034	2005
9	RK9CWW	873	2619	75	196425	2004
10	RZ9WWH	705	2115	76	160740	2000

SO AB MIXED HP

1	9K2HN	1301	3903	80	312240	2011
---	-------	------	------	----	--------	------

2	9K2HN	1116	3348	79	264492	2008
3	UN9L	837	2511	74	185814	2011
4	RO9O	643	1929	68	131172	2010
5	EX2M	658	1974	60	118440	2004
6	RK9AWN	551	1653	63	104139	2006
7	UN9L	577	1731	60	103860	2010
8	RO9O	569	1707	60	102420	2008
9	RK9CZO	525	1575	57	89775	2008
10	UA9CDC	366	1098	68	74664	2011

SO AB MIXED LP

1	RK9CR	400	1200	70	84000	2005
2	5B/US7IDX	384	1152	66	76032	2011
3	RL9AA	451	1353	51	69003	2008

4	UA9AFZ	431	1293	52	67236	2004	9	RX9AM	330	990	58	57420	2009
5	UA9CMQ	341	1023	64	65472	2006	10	UA9AM	284	852	61	51972	2004
6	4Z5MO	361	1083	60	64980	2004	SO 160M PHONE						
7	RA9FLW	428	1284	48	61632	2004	1	UA9SPY	4	12	4	48	2002
8	RK9CR	334	1002	61	61122	2004	2	TA3J	2	6	2	12	2002
9	UN6LN	474	1422	38	54036	2008	3	UA9XTU	1	3	1	3	2006
10	RL9AA	360	1080	49	52920	2007	SO 80M PHONE						
SO AB MIXED QRP							1	RX9AM	55	165	15	2475	2003
1	UA9CLB	487	1461	56	81816	2009	2	UA9LAU	55	165	15	2475	2006
2	RW9LL	188	564	43	24252	2008	3	RW9CD	39	117	14	1638	2011
3	RA9SO	159	477	50	23850	2006	4	UN9FB	6	18	5	90	2009
4	RV9AZ	204	612	36	22032	2009	SO 40M PHONE						
5	RA9CEX	155	465	47	21855	2010	1	RV9WJ	231	693	16	11088	2009
6	UN8PT	109	327	43	14061	2010	2	EK6TA	223	669	16	10704	2010
7	RW4AA/9	87	261	40	10440	2009	3	UA9JDP	177	531	16	8496	2009
8	RA0AY	91	273	33	9009	2009	4	UA9YAU	95	285	16	4560	2003
9	RW9QA	66	198	29	5742	2005	5	UA9JDP	95	285	16	4560	2007
10	RA9MU	60	180	31	5580	2011	6	UA9ACJ	46	138	14	1932	2003
SO TB MIXED							7	RU9CD	21	63	11	693	2008
1	UA9CSA	818	2454	48	117792	2008	8	UA9XSJ	12	36	8	288	2007
2	RV9JE	604	1812	48	86976	2006	9	UA9CGL	7	21	6	126	2009
3	UA9CSA	594	1782	48	85536	2005	10	JA4CSJ	8	24	5	120	2011
4	4L6QC	552	1656	48	79488	2009	SO 20M PHONE						
5	UN6LN	561	1683	47	79101	2006	1	EK3SA	344	1032	16	16512	2008
6	RV9JE	443	1329	48	63792	2005	2	5B4AIF	334	1002	16	16032	2009
7	RA9JP	508	1524	39	59436	2011	3	RZ9UI	325	975	16	15600	2011
8	RK9QWM	573	1719	32	55008	2011	4	C4B	312	936	16	14976	2008
9	RK9DR	411	1233	43	53019	2006	5	RA9AU	311	933	16	14928	2004
10	RV9WP	340	1020	48	48960	2009	6	RZ9UI	298	894	16	14304	2009
SO AB PHONE HP							7	RU9AC	273	819	16	13104	2004
1	5B4AIF	842	2526	75	189450	2011	8	RX9WN	268	804	16	12864	2008
2	RO9O	592	1776	62	110112	2011	9	RZ9UI	259	777	16	12432	2010
3	EK3SA	456	1368	66	90288	2010	10	UA9MAZ	255	765	16	12240	2000
4	EK3SA	501	1503	53	79659	2009	SO 15M PHONE						
5	5B4AIF	424	1272	44	55968	2010	1	RA9FLW	293	879	16	14064	2001
6	4X1HJ	356	1068	33	35244	2004	2	UN6LN	262	786	16	12576	2011
7	RX9JD	195	585	35	20475	2011	3	4X0A	231	693	16	11088	2011
8	RX9JD	153	459	26	11934	2007	4	RV9JD	224	672	16	10752	2003
9	RZ9OW	147	441	26	11466	2007	5	JA2CWU	167	501	16	8016	2003
10	VR2XMT	122	366	31	11346	2006	6	AP2IA	157	471	16	7536	2003
SO AB PHONE LP							7	RW9UDS	153	459	16	7344	2002
1	UA9SIV	408	1224	58	70992	2011	8	4X1VF	149	447	16	7152	2004
2	UA9ACJ	265	795	61	48495	2006	9	RV9WP	147	441	16	7056	2002
3	UA9XL	340	1020	46	46920	2010	10	RA9SUS	143	423	16	6768	2001
4	UA9ACJ	248	744	52	38688	2008	SO 10M PHONE						
5	RX9FR	227	681	47	32007	2009	1	UA9JDP	283	849	16	13584	2002
6	RV9WP	218	654	48	31392	2006	2	RU9BB	185	555	16	8880	2002
7	UA9ACJ	208	624	48	29952	2004	3	JK1OLT	157	471	16	7536	2002
8	UA9ACJ	161	483	56	27048	2005	4	4Z5LA	96	288	15	4320	2002
9	RV9CBW	235	705	37	26085	2009	5	7N2UQC	85	255	15	3825	2002
10	RZ9WU	176	528	44	23232	2009	6	JA6EFT	50	150	15	2250	2002
SO AB CW HP							7	JA6EFT	46	138	15	2070	2001
1	UA9SP	501	1503	78	117234	2006	8	JR7LVK	38	114	13	1482	2002
2	UA9SP	389	1167	74	86358	2004	9	JE1PJR	20	60	13	780	2002
3	RX9AF	413	1239	69	85491	2005	10	JH3DMQ/QRP	9	27	7	189	2002
4	UA9TT	436	1308	65	85020	2009	SO 160M CW						
5	UA9TT	423	1269	64	81216	2008	1	RU9BJ	45	135	15	2025	2001
6	RZ9AW	386	1158	64	74112	2009	2	4K9W	9	27	7	189	2004
7	RT9A	378	1134	64	72576	2011	3	JH2FXK	4	12	4	48	2009
8	UA9FGJ	294	882	71	62622	2011	4	JF7DZA	1	3	1	3	2006
9	RW9TA	309	927	61	56547	2009	SO 80M CW						
10	RV9LM	294	882	58	51156	2009	1	RA9SO	111	333	16	5328	2003
SO AB CW LP							2	UA9FMZ	91	273	16	4368	2005
1	RT9S	422	1266	75	94950	2011	3	UA9CGL	85	255	16	4080	2003
2	UA9MC	343	1029	72	74088	2005	4	RV9SV	82	246	16	3936	2006
3	RA9AP	371	1113	62	69006	2008	5	RA9WW	80	240	16	3840	2009
4	R9AX	353	1059	64	67776	2011	6	RV9LM	58	174	15	2610	2010
5	UD8A	310	930	71	66030	2011	7	UN5C	50	150	15	2250	2008
6	RW9CW	366	1098	60	65880	2009	8	R9WW	46	138	16	2208	2011
7	RX9FB	313	939	69	64791	2005							
8	UN9GD	320	960	65	62400	2010							

9	RK9AY	50	150	14	2100	2002
10	4Z8SM	38	114	15	1710	2011
SO 40M CW						
1	RA9AP	157	471	16	7536	2011
2	RU9CK	149	447	16	7152	2004
3	RX9AF	128	384	16	6144	2004
4	RA9DR	109	327	16	5232	2008
5	RA0AA	101	303	16	4848	2002
6	RZ9IR	106	318	15	4770	2004
7	RU9CD	95	285	16	4560	2009
8	RA0AA	98	294	15	4410	2003
9	UA9AFO	91	273	16	4368	2002
10	RX9DC	86	258	16	4128	2008

SO 20M CW						
1	EX2X	223	669	16	10704	2004
2	RK9AJZ	206	618	16	9888	2008
3	EX2X	202	606	16	9696	2011
4	RM9U	196	588	16	9408	2011
5	RV9JE	195	585	16	9360	2008
6	EX2X	179	537	16	8592	2006
7	RA9JG	178	534	16	8544	2008
8	RW9MD	178	534	16	8544	2002
9	RA0AA	173	519	16	8304	2006
10	RW0AJ	172	516	16	8256	2011

SO 15M CW						
1	UN9LN	216	648	16	10368	2001
2	RW9QA	184	552	16	8832	2001
3	RW0AJ	147	441	16	7056	2002
4	RK0AB	140	420	16	6720	2011

EUROPE (without Poland)

MO AB MIXED						
No.	CALL	QSOs	Points	Mult	Score	Year
1	RZ4HWS	1040	3114	81	252234	2001
2	RN3F	1055	3165	76	240540	2011
3	RZ4FWW	871	2613	85	222105	2011
4	UF3CWR	848	2544	80	203520	2002
5	RZ6HWA	897	2691	74	199134	2003
6	UU7J	988	2964	66	195624	2009
7	UU7J	1014	3042	64	194688	2008
8	MU0ULC	938	2814	68	191352	2003
9	RF3A	839	2517	72	181224	2006
10	UF3CWR	712	2135	82	175070	2000

SO AB MIXED HP						
1	RK4FF	1075	3225	79	254775	2004
2	RA4LW	1014	3042	69	209898	2008
3	UW2M	888	2664	74	197136	2010
4	RG3K	926	2778	69	191682	2008
5	RG3K	870	2610	69	180090	2009
6	RK3M	862	2586	69	178434	2011
7	RA4LW	921	2763	63	174069	2009
8	UA3QDX	845	2535	64	162240	2006
9	UA4PN	684	2052	74	151848	2011
10	RG3K	688	2064	68	140352	2010

SO AB MIXED LP						
1	LY9A	663	1989	74	147186	2006
2	UA4FRL	702	2106	64	134784	2008
3	UU2CW	630	1890	70	132300	2011
4	UA4FRL	587	1761	64	112704	2006
5	HA6NL	506	1518	69	104742	2011
6	MU/SP9JZT	581	1743	59	102837	2006
7	UA4FER	550	1650	62	102300	2005
8	RN6FA	470	1410	69	97290	2004
9	LY9A	452	1356	71	96276	2005
10	RU4SS	552	1656	56	92736	2010

SO AB MIXED QRP						
1	UA6LCJ	298	894	66	59004	2011
2	RU7A	284	852	61	51972	2011
3	LZ9W	259	777	59	45843	2005
4	UA6LCJ	268	804	54	43416	2008

5	ROAA	118	354	16	5664	2011
6	JA5EO	115	345	16	5520	2001
7	UN9LN	113	339	16	5424	2000
8	JM1LRQ	110	330	16	5280	2000
9	4K9W	108	324	16	5184	2011
10	EZ8BO	105	306	16	4896	2001

SO 10M CW						
1	4Z5AX	226	675	16	10800	2001
2	4X1VF	197	591	16	9456	2001
3	9K2RR	180	540	16	8640	2002
4	3W7CW	153	459	16	7344	2001
5	UN7EX	144	432	16	6912	2002
6	JH3WKE	105	315	16	5040	2002
7	JS6GIM	95	285	16	4560	2002
8	RA9OM	52	156	15	2340	2000
9	UN7EX	59	177	13	2301	2001
10	JA6WBK	50	150	15	2250	2002

SWL MIXED						
1	R90-197	285	855	53	45315	2006
2	4X43141	216	633	61	38613	1999
3	EZ8-001	210	630	31	19530	2009
4	UA0-103-16	85	255	32	8160	2009
5	R90-11	39	117	23	2691	2011
6	JA5-3278	52	156	15	2340	2000
7	JA5 3278	16	138	16	2208	2001
8	ROA-73	20	60	17	1020	2004
9	DS1JFY	21	12	63	756	2003
10	JA5-3278	19	57	13	741	1999

5	LZ2RS	255	765	56	42840	2009
6	OK2BUT	307	921	46	42366	2011
7	UA1CUR	260	780	54	42120	2009
8	UA6LCJ	269	807	52	41964	2006
9	RW6FO	280	840	48	40320	2009
10	RN6AL	264	792	50	39600	2005

SO TB MIXED						
1	UT7QF	822	2466	48	118368	2004
2	UY5QQ	815	2445	48	117360	2004
3	UW5Q	786	2358	48	113184	2008
4	UA4PN	777	2331	48	111888	2009
5	9A3B	692	2076	48	99648	2009
6	LY7M	664	1992	48	95616	2011
7	9A5KV	663	1989	48	95472	2004
8	YL7A	662	1986	48	95328	2008
9	UA4PN	653	1959	48	94032	2008
10	4O/YU1YV	628	1884	48	90432	2008

SO AB PHONE HP						
1	UR5GDY	646	1938	73	141474	2011
2	RN3ZC	596	1788	74	132312	2011
3	UI4I	589	1767	67	118389	2011
4	RK4FW	639	1917	61	116937	2009
5	RK4FW	574	1722	64	110208	2008
6	ES5GP	476	1425	74	105450	2011
7	RK4FW	553	1659	60	99540	2010
8	RA4HTX	530	1590	59	93810	2007
9	RA3AUM	545	1635	55	89925	2009
10	UT8LN	421	1263	70	88410	2004

SO AB PHONE LP						
1	UA3BL	438	1314	66	86724	2011
2	YO3CZW	413	1239	57	70623	2008
3	UA4FRL	364	1092	61	66612	2007
4	EI9JN	451	1353	49	66297	2004
5	UA6YN	404	1212	52	63024	2011
6	YO3CZW	357	1071	54	57834	2010
7	RV4HC	467	1401	41	57441	2006
8	LY1SR	383	1149	45	51705	2011
9	YO3CZW	386	1158	43	49794	2009
10	UA3BL	294	882	56	49392	2009

SO AB CW HP

1	RT3T	566	1698	82	139236	2011
2	UW5M	494	1482	78	115596	2010
3	RT3T	518	1554	67	104118	2009
4	RT3T	468	1404	74	103896	2004
5	RD3A	433	1299	77	100023	2004
6	RK3DZB	456	1368	71	97128	2009
7	RT3T	492	1476	64	94464	2008
8	RT3T	423	1269	73	92637	2010
9	RU4SS	490	1470	63	92610	2009
10	RT3F	400	1200	76	91200	2011

SO AB CW LP

1	UA4FCO	397	1191	85	101235	2011
2	RU4SS	468	1404	65	91260	2008
3	LY3B	383	1149	75	86175	2011
4	UA4ALI	404	1212	71	86052	2011
5	RW4FO	456	1368	62	84816	2006
6	UA6LTI	374	1122	69	77418	2005
7	F5NOD	377	1131	68	76908	2004
8	LZ9R	387	1161	64	74304	2008
9	RO6A	394	1182	62	73284	2011
10	UA3RC	300	900	73	65700	2011

SO 160M PHONE

1	LY3BH	81	243	16	3888	2003
2	LY2HM	75	225	16	3600	2004
3	UR5MNZ	73	219	16	3504	2004
4	DJ0IF	51	153	16	2448	2003
5	UA2FCB	50	150	16	2400	2006
6	UR7M	49	147	16	2352	2001
7	YO6BZL	45	135	16	2160	2008
8	RW3XX	51	153	13	1989	2009
9	UT2PX	46	138	14	1932	2009
10	LY2J	42	126	15	1890	2008

SO 80M PHONE

1	US0YW	327	981	16	15696	2008
2	EW4MM	323	969	16	15504	2008
3	9A5KV	312	936	16	14976	2008
4	RV3WT	301	903	16	14448	2008
5	YU0U	301	903	16	14448	2008
6	US5WU	285	855	16	13680	2008
7	OM7AB	277	831	16	13296	2008
8	DL1A	266	798	16	12768	2008
9	UR0DXX	255	765	16	12240	2006
10	US0YW	254	762	16	12192	2009

SO 40M PHONE

1	DJ0IF	308	921	16	14736	2011
2	LY1R	299	897	16	14352	2011
3	S51CK	281	843	16	13488	2008
4	SV2DCD	265	795	16	12720	2008
5	S51CK	245	735	16	11760	2004
6	DJ0IF	238	714	16	11424	2006
7	DF3AAA	233	699	16	11184	2001
8	PD1DX	231	693	16	11088	2008
9	UT1T	222	666	16	10656	2002
10	PD2DX	215	645	16	10320	2009

SO 20M PHONE

1	SV3DCX	383	1149	16	18384	2011
2	UA3TCJ	382	1146	16	18336	2003
3	RU3VV	363	1089	16	17424	2011
4	UR5QRB	352	1053	16	16848	2001
5	UT8LN	339	1017	16	16272	2001
6	UT7QL	338	1014	16	16224	2001
7	YO4CIS	333	999	16	15984	2001
8	EI/SP9JZT	310	930	16	14880	2003
9	IW0HLZ	305	915	16	14640	2011
10	EA2DT	303	909	16	14544	2011

SO 15M PHONE

1	EA1OT	265	795	16	12720	2001
2	RA6AMA	193	579	16	9264	2001
3	CT1ETE	187	561	15	8415	2002

4	UA4ACP	189	549	15	8235	2001
5	EC7ABV	164	492	16	7872	2011
6	EC5AFC	141	423	16	6768	2001
7	EC1CSV	120	360	16	5760	2004
8	EI4CF	120	360	15	5400	2002
9	EC5AFC	99	297	16	4752	1999
10	UA4ACP	68	204	15	3060	2003

SO 10M PHONE

1	CT1FLD	122	366	16	5856	2002
2	YL/RZ3BY	48	144	16	2304	2002
3	DL3AG	9	27	5	135	2000

SO 160M CW

1	LY2BW	92	276	16	4416	2003
2	S57DX	86	258	16	4128	2008
3	OM4JD	78	234	16	3744	2008
4	RA3AH	75	225	16	3600	2008
5	UA3PM	73	219	16	3504	2008
6	EU3AR	72	216	16	3456	2008
7	EU3AR	74	222	15	3330	2011
8	HA8BE	74	222	15	3330	2011
9	EU3AR	68	204	16	3264	2009
10	US9PA	68	204	16	3264	2006

SO 80M CW

1	9A2W	208	624	16	9984	2002
2	HA8FK	188	564	16	9024	2008
3	RA6AFB	188	561	16	8976	2001
4	LY3BB	174	522	16	8352	2008
5	HA1DAE	165	495	16	7920	2008
6	S51DX	155	465	16	7440	2008
7	LY5W	152	456	16	7296	2008
8	HG30LP	152	456	16	7296	2011
9	UT7UJ	145	435	16	6960	2003
10	HA0LP	145	435	16	6960	2009

SO 40M CW

1	OH6M	235	705	16	11280	2008
2	UX3MZ	228	684	16	10944	2008
3	RW3XM	223	669	16	10704	2008
4	R3ZZ	212	636	16	10176	2011
5	UX3IO	209	627	16	10032	2008
6	OH6M	206	618	16	9888	2009
7	LZ2RF	205	615	16	9840	2002
8	9A3VM	192	576	16	9216	2009
9	S57DX	188	564	16	9024	2006
10	LZ4TX	186	558	16	8928	2009

SO 20M CW

1	RA1OK	62	186	16	43416	2000
2	RW3VA	215	645	16	10320	2011
3	R3QA	211	633	16	10128	2011
4	UA4CCG	210	630	16	10080	2008
5	RX6AM	206	618	16	9888	2011
6	UA3VQL	200	600	16	9600	2011
7	RN6AT	199	597	16	9552	2011
8	RA1OT	197	591	16	9456	2011
9	RO5O	197	591	16	9456	2011
10	RD3PX	195	585	16	9360	2011

SO 15M CW

1	RA4HW	191	573	16	9168	2002
2	RA4PQC	159	477	16	7632	2002
3	RN4SS	141	423	15	6345	2002
4	RZ6HX	128	384	15	5760	2002
5	EA7TL	114	342	15	5130	2011
6	RZ6HX	84	252	15	3780	2003
7	UA4SAW	83	249	14	3486	2002
8	RA4HW	66	198	15	2970	2003
9	UA1ANX	54	162	16	2592	2002
10	RU4SS	54	162	14	2268	2003

SO 10M CW

1	DL8TWA	25	75	11	825	2000
2	DK3LT	11	33	8	264	2002
3	UA3RJ	4	12	3	36	2001

4	UA6AK	2	6	2	12	2011
SWL MIXED						
1	UA3-170-847	750	2250	91	204750	2001
2	UA3-170-8	798	2394	79	189126	2003
3	UA3-170-847	585	1755	94	164970	2002
4	OM3 - 001	507	1521	90	136890	2002

5	OM3-0001	489	1467	83	121761	2001
6	LYR-794	451	1353	86	116358	2003
7	OM3-0001	466	1398	81	113238	2003
8	UA3-155-28	391	1173	89	104397	2002
9	OM3-0001	430	1290	77	99330	2004
10	OM3-0001	344	1032	84	86688	2000

NORTH AMERICA

MO AB MIXED

1	W1/VA3PL	538	1614	67	108138	2005
2	AA3B	316	948	76	72048	2002
3	WOAIH	426	1278	49	62622	2001
4	W1/VA3PL	346	1038	58	60204	2003
5	NO9E	294	882	58	51156	2002
6	WOAIH	285	855	43	36765	2009
7	AA3B	150	450	56	25200	2003
8	VE3MIS	224	672	36	24192	2007
9	NJ6P	197	591	40	23640	2002
10	VE3MIS	187	561	41	23001	2006

SO AB MIXED HP

1	K3WW	691	2073	65	134745	2011
2	W1/VA3PL	501	1503	58	87174	2004
3	K3ZO	519	1557	53	82521	2009
4	K3WW	402	1206	58	69948	2009
5	K3ZO	467	1401	49	68649	2010
6	K3WW	431	1293	51	65943	2010
7	K3WW	389	1167	56	65352	2008
8	K3WW	333	999	63	62937	2005
9	K3WW	319	957	63	60291	2006
10	NO9E	271	813	56	45528	2011

SO AB MIXED LP

1	K3TW	241	723	50	36150	2006
2	VE3DZ	213	639	47	30033	2006
3	K3TW	216	648	41	26568	2010
4	N8OO	198	594	44	26136	2004
5	K3TW	166	498	41	20418	2008
6	VE9ML	146	438	43	18834	2011
7	TI5/NOKE	123	369	48	17712	2004
8	VE1RGB	122	366	48	17568	2008
9	NK3Y	139	417	36	15012	2011
10	K0RC	96	288	35	10080	2007

SO AB MIXED QRP

1	N2CQ	21	63	11	693	2004
2	W2MFT	17	51	12	612	2010
3	AE3A	13	39	11	429	2010
4	VE3KZ	12	36	9	324	2011
5	WB0IWG	11	33	8	264	2011
6	KA9O	3	9	3	27	2011
7	WB2R	3	9	3	27	2011

SO TB MIXED

1	VA3PL	536	1608	46	73968	2009
2	K3TW	439	1317	47	61899	2005
3	VA3PL	271	813	44	35772	2011
4	K3TW	245	735	48	35280	2007
5	W2GB	267	801	44	35244	2009
6	K9RS	234	702	45	31590	2009
7	VA3PL	309	927	31	28737	2010
8	VA3PL	211	633	42	26586	2006
9	W4EEH	202	606	43	26058	2009
10	N3XOF	191	573	38	21774	2011

SO AB PHONE HP

1	KU1T	325	975	49	47775	2011
2	VA3KA	243	729	41	29889	2009
3	VA3KA	285	852	34	28968	2004
4	VE3SY	177	531	35	18585	2007
5	KA8Q	91	273	40	10920	2011
6	VE3BDN	144	432	24	10368	2011
7	VE3BDN	119	357	23	8211	2008
8	KA8Q	68	204	31	6324	2009

9	W1/SP2UUU	54	162	29	4698	2005
10	K2QD	45	135	23	3105	2004

SO AB PHONE LP

1	VE3DXP	117	351	39	13689	2011
2	VE3DXP	96	288	41	11808	2006
3	VE3BDN	164	492	24	11808	2010
4	VO1BBN	89	267	41	10947	2011
5	VE3DXP	93	279	31	8649	2009
6	VE3DXP	81	243	34	8262	2005
7	VE3DXP	101	303	22	6666	2010
8	VO1BBN	76	228	29	6612	2009
9	VE3DXP	69	207	28	5796	2004
10	AB2TC	65	195	29	5655	2011

SO AB CW HP

1	K1GQ	370	1110	71	78810	2011
2	VA3EF	361	1083	66	71478	2011
3	VA3EF	378	1134	62	70308	2006
4	VE3QAA	361	1083	63	68229	2006
5	VE3QAA	326	978	64	62592	2005
6	AA1V	299	897	69	61893	2011
7	N3RS	325	975	62	60450	2006
8	NI1L	373	1119	54	60426	2010
9	VE3QAA	342	1026	57	58482	2009
10	VE3QAA	326	978	59	57702	2004

SO AB CW LP

1	K3LU	261	783	54	42282	2011
2	VE1RGB	203	609	59	35931	2011
3	WB2AA	205	615	56	34440	2005
4	VE3DZ	224	672	44	29568	2009
5	WB2AA	161	483	59	28497	2004
6	VE1RGB	145	435	54	23490	2009
7	VE1RGB	178	534	42	22428	2005
8	K3LU	180	540	40	21600	2010
9	ZF2NT	144	432	48	20736	2004
10	VE1RGB	131	393	45	17685	2006

SO 80M PHONE

1	K1QJ	15	45	10	450	2002
2	VE3CTL	8	24	7	168	2010
3	W5PR	5	15	4	60	2005

SO 40M PHONE

1	FM5FJ	53	159	15	2385	2006
2	FM5FJ	30	90	12	1080	2011
3	VE6JY	13	39	8	312	2009
4	VE6POL	12	36	8	288	2007
5	K4JRB	11	33	8	264	2011
6	N4MM	7	21	5	105	2009
7	K4JRB	6	18	5	90	2006
8	VA3STZ	4	12	3	36	2007
9	VA3APZ	2	6	2	12	2007
10	8P6CF	1	3	1	3	2010

SO 20M PHONE

1	VE6POL	245	735	16	11760	2006
2	VE3BDN	201	603	16	9648	2009
3	KE1DZ	166	498	16	7968	1999
4	VE6POL	146	438	16	7008	2005
5	KE1DZ	146	438	16	7008	2001
6	VE3CTL	138	414	16	6624	2009
7	KE1DZ	123	369	16	5904	2000
8	N1IXF	127	381	15	5715	2011
9	VE3CTL	104	312	16	4992	2007

10	VE3MLB	201	303	16	4848	2010
SO 15M PHONE						
1	N4MM	144	432	16	6912	2004
2	N3XOF	96	288	16	4608	2004
3	KX9DX	68	204	16	3264	2002
4	VE3BDN	67	201	14	2814	2004
5	N6KUZ	56	168	16	2688	2003
6	KA0GGI	46	138	14	1932	2002
7	N6KUZ	37	108	14	1512	2001
8	VE3TTZ	32	96	13	1248	2004
9	VE3TW	27	81	12	972	2004
10	VA3APZ	19	57	11	627	2011
SO 10M PHONE						
1	VA3KA	209	627	16	10032	2002
2	W5PR	168	504	16	8064	2002
3	VE3JQJ	105	315	16	5040	2002
4	VE3TTZ	51	153	15	2295	2002
5	KG2KJ	40	120	13	1560	2000
6	WB0IWG	20	60	11	660	2000
7	WB0IWG	7	21	5	105	2002
8	WV4V/M	2	6	1	6	2000
SO 160M CW						
1	K6ND	21	63	14	882	2009
2	VA3EF	20	60	11	660	2009
SO 80M CW						
1	N4AF	40	120	15	1800	2009
2	N4AF	37	111	13	1443	2010
3	WG4FOC	26	78	15	1170	2004
4	VA3EF	20	60	14	840	2004
5	N3UA	15	45	11	495	2005
6	WG4FOC	10	30	7	210	2003
7	W4ATL	2	6	2	12	2004
SO 40M CW						
1	K3TW	126	378	16	6048	2009
2	NI1L	111	333	16	5328	2009
3	K3TW/4	110	330	16	5280	2011

OCEANIA

MO AB MIXED						
1	VK3CRP	315	945	32	30240	2002
2	YE5XMD	7	21	6	126	2003
SO AB MIXED HP						
1	VK6DXI	256	768	56	43008	2004
2	VK6DXI	249	747	51	38097	2006
3	VK6DXI	167	501	51	25551	2008
4	VK6DXI	95	285	44	12540	2009
5	9M6XR0	55	165	20	3300	2010
6	ZL2UO	47	141	21	2961	2008
7	YB3IZK	48	144	18	2592	2008
8	WHOEWX	6	18	6	108	2011
SO AB MIXED LP						
1	YB3IZK	85	255	29	7395	2011
2	YE1AA	74	222	27	5994	2007
3	YC3TKH	25	75	17	1275	2010
4	YB3MM	11	33	11	363	2007
SO TB MIXED						
1	YB4IR	174	522	28	14616	2009
2	VK8AV	73	219	33	7227	2004
3	VK2AR	20	60	13	780	2004
SO AB PHONE HP						
1	ZL2UO	109	327	27	8829	2004
2	ZL2UO	103	309	19	5871	2011
3	ZL2UO	69	207	21	4347	2006
4	YB1TC	74	222	19	4218	2006
5	YB0NFL	48	144	16	2304	2009
6	ZL2UO	41	123	18	2214	2010

4	N4PL	99	297	16	4752	2010
5	K6NDV	93	279	16	4464	2009
6	N4PL	88	264	16	4224	2011
7	N4PL	86	258	16	4128	2009
8	N4PL	80	240	16	3840	2005
9	N4PL	76	228	16	3648	2003
10	W1RM	78	234	15	3510	2004

SO 20M CW

1	VE3KZ	155	465	16	7440	2010
2	VE3KZ	141	423	16	6768	2005
3	K8MP	122	366	16	5856	2009
4	AE1T	119	357	16	5712	2011
5	K1BV	115	345	16	5520	2009
6	AE1T	107	321	16	5136	2010
7	KR2AA	104	312	16	4992	2011
8	VE3PND	105	306	16	4896	2001
9	K3TW	102	306	16	4896	2004
10	N3GJ	98	294	16	4704	2009

SO 15M CW

1	K3TW	95	285	16	4560	2003
2	VA3UA	61	183	16	2928	2001
3	K9WA	52	156	16	2496	2004
4	W4OEL	50	147	16	2352	2001
5	KX9DX	57	165	14	2310	2001
6	K5NZ	54	162	13	2106	2003
7	K6EID	35	105	15	1575	2004
8	K2YJL	33	99	13	1287	1999
9	VA3TTT	32	96	12	1152	2000
10	W2BVH	18	54	12	648	2001

SO 10M CW

1	VA3UA	63	189	13	2457	2000
2	K3TW	20	60	12	720	2002
3	N4UY/QRP	11	33	8	264	2000
4	K9NW	11	33	7	231	2000

SWL MIXED

1	W1-7897	81	243	35	8505	2009
---	---------	----	-----	----	------	------

7	ZL2DZ	32	96	21	2016	2008
8	ZL2UO	24	72	16	1152	2005
9	VK6NU	26	78	11	858	2005
10	VK7ZE	9	27	8	216	2009

SO AB PHONE LP

1	VK4ATH	58	174	23	4002	2011
2	YE1AA	40	120	22	2640	2008
3	YB1UUN	23	69	14	966	2010
4	YC3MM	4	12	3	36	2005

SO AB CW HP

1	YB4IR	147	441	42	18522	2010
2	VK8AV	105	315	37	11655	2005
3	VK7GN	57	171	31	5301	2011
4	VK4AN	53	159	32	5088	2007
5	VK7GN	48	144	28	4032	2008
6	VK2NU	9	27	7	189	2007
7	VK6DXI	4	12	4	48	2010

SO AB CW LP

1	YB3XM	116	348	35	12180	2011
2	YB1ALL	78	234	28	6552	2011
3	YB3XM	59	177	37	6549	2010
4	YB1ALL	43	129	24	3096	2010
5	DV1/JO7KMB	27	81	18	1458	2010
6	VK4AN	30	90	16	1440	2006
7	VK4TT	23	69	13	897	2011
8	VK4TT	22	66	13	858	2004
9	VK4TT	18	54	15	810	2010
10	VK6DXI	14	42	10	420	2011

SO 40M PHONE

1	YC6EN	45	135	15	2025	2010
2	YC6EN	44	132	14	1848	2009
3	YC5VB	22	66	13	858	2009
4	YC5BOY	6	18	4	72	2009
5	YC5SY	5	15	4	60	2009
6	VK5FIVE	3	9	3	27	2010
7	VK2OE	2	6	2	12	2006
8	4D1N	1	3	1	3	2009
9	VK5FIVE	1	3	1	3	2011

SO 20M PHONE

1	DU1BP	80	240	16	3840	2010
2	YB0BCU	59	177	15	2655	2009
3	ZL2DZ	61	183	14	2562	2002
4	ZL2DZ	52	156	15	2340	2003
5	V85TX	54	162	14	2268	2010
6	ZL2DZ	45	132	16	2112	2001
7	VK3CTN	49	147	14	2058	2008
8	YB0NFL	28	84	14	1176	2008
9	ZL2LDX	26	78	14	1092	2001
10	VK3EST	30	90	12	1080	2003

SO 15M PHONE

1	YC9WZJ	129	387	16	6192	2003
2	YC3IZK	123	369	15	5535	2001
3	YB1BAD	86	258	15	3870	2006
4	YC3IZK	48	144	13	1872	2002
5	YB1UUN	35	105	15	1575	2011
6	YC5OUB	27	81	13	1053	2007
7	YC5OUB	10	30	5	450	2009
8	VK3EX	14	42	9	378	2000
9	YCOBCU	8	24	7	168	2007
10	DU1LER	7	21	5	105	2000

SOUTH AMERICA**SO AB MIXED HP**

1	PS2T	383	1149	60	68940	2005
2	HK3Q	124	372	45	16740	2011
3	HK3Q	103	309	38	11742	2009
4	PY2MTV	46	138	31	4278	2010
5	PY2MTV	21	63	13	819	2011
6	PT7CB	8	24	8	192	2009

SO AB MIXED LP

1	PY7RP	27	81	11	891	2009
2	PJ4/W9NJY	13	39	11	429	2007
3	LU2EE	7	21	6	126	2007

SO AB MIXED QRP

1	PY4ZO	30	90	21	1890	2011
2	PJ2BVU	4	12	4	48	2007

SO TB MIXED

1	PY5ZHP	510	1530	48	73440	2004
2	PY5ZHP	485	1455	48	69840	2006
3	PY5/SP8SIW	138	414	38	15732	2011
4	PR5Z	101	303	28	8484	2009
5	LU2NI	68	204	29	5916	2008
6	LU5FT	64	192	30	5760	2004
7	PY5ZHP	73	219	26	5694	2011
8	LW6DW	26	78	20	1560	2011
9	PY7OJ	15	45	13	585	2004
10	PY6HL	11	33	10	330	2009

SO AB PHONE HP

1	PY5/SQ7NSN	306	918	60	55080	2011
2	LU2NI	58	174	27	4698	2010
3	LU2NI	46	138	27	3726	2006
4	LU2NI	47	141	22	3102	2009
5	PY7VI	37	111	27	2997	2011
6	PY7VI	26	78	12	936	2009

SO 10M PHONE

1	VK4NEF	55	165	15	2475	2002
2	9M6CT	51	153	16	2448	2002
3	VK2CZ	19	57	13	741	2002
4	VK2CZ	12	36	8	288	2001

SO 40M CW

1	VK6DXI	40	120	15	1800	2007
2	ZL2AGY	21	63	14	882	2011
3	VK2AR	20	60	12	720	2010
4	YD1JZ	18	54	13	702	2007
5	VK2AR	20	60	11	660	2011
6	ZL1BHQ	18	54	11	594	2008
7	VK8AV	16	48	10	480	2008
8	YD1JZ	14	42	11	462	2008
9	VK2AR	12	36	10	360	2009
10	VK8AV	10	30	8	240	2007

SO 20M CW

1	VK3CTN	69	207	16	3312	2011
2	VK2AR	67	201	15	3015	2003
3	VK7GN	54	162	16	2592	2006
4	VK3CTN	52	156	15	2340	2005
5	VK2AR	44	132	14	1848	2002
6	VK7GN	36	108	14	1512	2009
7	VK3CTN	27	81	15	1215	2006
8	YB2DGR	20	60	13	780	2004
9	VK7GN	15	45	13	585	2004
10	ZL3TE	13	39	7	273	2010

SO 15M CW

1	YD1JZ	130	390	16	6240	2006
2	YB2MTA	53	159	15	2385	2006
3	YB2MTA	46	138	14	1932	2005
4	YB2MTA	18	54	12	648	2003
5	VK4TT	21	63	10	630	1999

7	PY5ZD	2	6	2	12	2007
---	-------	---	---	---	----	------

SO AB PHONE LP

1	HK3JJH	78	234	34	7956	2010
2	PY7VI	60	180	20	3600	2008
3	HK3JJH	9	27	8	216	2004

SO AB CW HP

1	PY5/SP7ASZ	275	825	52	42900	2011
2	LU8QT	135	405	46	18630	2011
3	P43JB	121	363	25	9075	2009
4	PP1CZ	92	276	29	8004	2011
5	PY7GK	47	141	28	3948	2010
6	LU1DZ	35	105	21	2205	2007
7	PY7GK	25	75	19	1425	2011
8	PY5ZHP	25	75	18	1350	2007
9	PT3A	23	69	12	828	2011
10	PR5Z	10	30	10	300	2010

SO AB CW LP

1	PY7XC	243	729	52	37908	2011
2	LU1EWL	135	405	44	17820	2004
3	PU9OSB	106	318	28	8904	2010
4	LU1XS	88	261	27	7047	2004
5	PY8MGB	67	201	23	4623	2008
6	LU1EWL	59	177	25	4425	2006
7	LU3FID	41	123	23	2829	2010
8	PY5MJ	33	99	25	2475	2009
9	YW7A	28	84	21	1764	2008
10	PY7GK	35	105	15	1575	2004

SO 40M PHONE

1	YY4ZD	14	42	10	420	2006
2	PY6KY	11	33	7	231	2011
3	YY4TEA	8	24	6	144	2006
4	PY6KY	6	18	6	108	2008

5	PJ2LS	1	3	1	3	2009
6	LU1ALF	1	3	1	3	2010
7	PY6KY	0	0	0	0	2009

SO 20M PHONE

1	4M3Y	31	93	13	1209	2001
2	LR1H	31	93	12	1116	2008
3	LR1H	24	72	12	864	2009
4	PY2HL	27	81	8	648	2011
5	PY7VI	19	54	10	540	2007
6	LU7DS	6	18	5	90	2000
7	PY7VI	4	12	3	36	2010
8	PY1KN	0	0	0	0	2008

SO 15M PHONE

1	3G5A	111	333	16	5328	2002
2	XQ5SM	78	234	14	3276	2001
3	PY6KW	59	177	16	2832	2003
4	ZY2Z	45	135	13	1755	2003
5	PY1SX	28	84	14	1176	2011
6	YV2FEQ	28	84	13	1092	2004
7	PY5/SP7IFX	22	66	11	726	2011
8	LU7DS	22	66	10	660	2001
9	LU7JA	10	30	9	270	2004
10	PY5FO	12	36	6	216	2011

SO 10M PHONE

1	ZW2TV	68	204	16	3264	2003
2	PY1SX	44	132	15	1980	2001
3	PY1SX	38	114	15	1710	2002
4	PY4BK	36	108	11	1188	2000
5	PY2TO	26	78	15	1170	2003
6	PY1SX	18	55	11	726	2000
7	LW7EGO	20	54	11	594	1999
8	PS8SP	16	48	8	384	2003
9	PY2ADR	10	30	7	210	2011
10	PU2TES	7	21	5	105	2000

SO 40M CW

1	PY2HL	39	117	14	1638	2010
2	LU4MHQ	24	72	13	936	2007

POLAND

MO AB MIXED

1	SP3KEY	n/d*	3631	228	827868	2000
2	SP2PIK	1846	3551	205	727955	2009
3	SO9S	1762	3082	198	610236	2009
4	SN3R	1621	2807	210	589470	2011
5	SN3R	1359	2402	242	581284	2003
6	SN6Z	1707	3153	179	564387	2009
7	SN3R	1704	2514	217	545538	2008
8	SP8YMM	1580	2751	190	522690	2002
9	SP3KFH	1404	2568	199	511032	2002
10	SN9D	1586	3055	161	491855	2009

SO AB MIXED HP

1	SN7Q	1598	3258	197	641826	2005
2	SN2B	1555	2749	227	624023	2006
3	SN2B	1682	2781	213	592353	2010
4	SP4Z	1691	3066	191	585606	2009
5	SN7Q	1627	3075	180	553500	2009
6	SP4Z	1442	2542	213	541446	2005
7	SO2R	1537	2453	211	517583	2008
8	3Z80PZK	1451	2341	203	475223	2010
9	SN7Q	1262	2304	183	421632	2007
10	SP4Z	1261	2021	202	408242	2004

SO AB MIXED LP

1	SN8F	1125	2045	159	325155	2005
2	SQ9UM	1175	1757	174	305718	2011
3	SN8F	1118	1712	168	287616	2006
4	SP3HRN	954	1482	123	182286	2010
5	SP5EOT	823	1143	140	160020	2011
6	SP5GRM	778	1169	133	155477	2010
7	SP5ELA	711	1015	148	150220	2004
8	SO9G	740	1100	136	149600	2011

3	LU4MHQ	25	75	12	900	2009
4	LU4MHQ	14	42	10	420	2006
5	LU4MHQ	13	39	10	390	2005
6	LU4MHQ	13	39	9	351	2008
7	PY7GK	8	24	5	120	2007
8	PY7OJ	4	12	4	48	2010
9	PY7OJ	3	9	3	27	2006

SO 20M CW

1	LU8QT	41	123	15	1845	2009
2	LW5EE	41	123	14	1722	2003
3	PY1CE	43	129	13	1677	2001
4	PY4FQ	38	114	13	1482	2008
5	YV7QP	34	102	13	1326	2007
6	PY7GK	25	75	14	1050	2009
7	PY2SEX	24	72	11	792	2009
8	PY4CEL	21	63	10	630	2003
9	PY3AU	19	57	11	627	2009
10	LU5BE	16	48	11	528	2006

SO 15M CW

1	P4/AA1M	81	243	16	3888	2002
2	PY8MGB	57	171	15	2565	2004
3	LU1GOE	52	156	14	2184	2003
4	PY4FQ	44	132	15	1980	2004
5	PY8MGB	40	120	14	1680	2005
6	PY4XX	36	108	13	1404	2011
7	YV7QP	26	78	13	1014	2004
8	LW5DD	19	57	11	627	2006
9	PY4FQ	15	45	9	405	2011
10	PY4XX	12	36	8	288	2010

SO 10M CW

1	PY2WC	95	285	15	4275	2011
2	LW3EX	21	63	10	630	2004
3	PY7OJ	7	21	7	147	2003
4	PY2XC	6	18	6	108	2011
5	LW2HBF	5	15	4	60	2011

9	SQ5STS	721	969	139	134691	2011
10	SP2DNI	745	963	128	123264	2011

SO AB MIXED QRP

1	SP2DNI	836	1100	124	136400	2010
2	SP9NSV/7	713	1015	132	133980	2011
3	SP2DNI	697	943	115	108445	2009
4	SP9NSV/7	556	784	108	84672	2009
5	SP9NSV/7	550	730	114	83220	2008
6	SP5DDJ	488	690	120	82800	2006
7	SO2D	403	631	106	66886	2011
8	SP5LM	380	560	116	64960	2011
9	SP5DDJ	414	618	103	63654	2004
10	SP2DMB/3	471	654	94	61476	2005

SO TB MIXED

1	SO8A	1633	3197	166	530702	2009
2	SP8BRQ	1143	2075	160	332000	2006
3	SO8A	1114	1893	146	276378	2010
4	SN8R	1124	2156	121	260876	2010
5	SP5MXZ	1163	1688	151	254888	2008
6	SN8R	1222	1844	129	237876	2011
7	SN5N	1110	1732	135	233820	2009
8	SN5N	1117	1795	128	229760	2005
9	SP9W	1093	1705	129	219945	2009
10	SN8R	868	1817	120	218040	2009

SO AB PHONE HP

1	SP6IXF	965	1691	175	295925	2011
2	SP6IXF	1051	1969	147	289443	2009
3	SO9Q	953	1473	146	215058	2010
4	SN8B	800	1433	141	202053	2011
5	SP9QMP	734	1350	148	199800	2011

6	SN3A	769	1141	168	191688	2008
7	SP6IXF	705	1189	147	174783	2004
8	SO9Q	658	1269	127	161163	2007
9	SO9L	730	1022	142	145124	2008
10	SO6X	616	992	146	144832	2006
SO AB PHONE LP						
1	SP9AQF	632	992	128	126976	2011
2	SP3GXH	502	874	122	106628	2011
3	SP3GXH	466	786	131	102966	2004
4	SP9QMP	391	723	115	83145	2004
5	SP7EKL	472	680	121	82280	2007
6	SP5VYI	462	668	122	81496	2004
7	SQ8JX	485	643	115	73945	2010
8	SP3GXH	467	635	114	72390	2008
9	SP7MTF	459	619	116	71804	2006
10	SP7EKL	397	583	123	71709	2006
SO AB CW HP						
1	SO2R	1447	2801	188	526588	2005
2	SN7Q	1378	2476	208	515008	2006
3	SN7Q	1503	2493	202	503586	2010
4	SN7Q	1251	2107	219	461433	2004
5	SN7Q	1356	2152	203	436856	2008
6	SO2R	1170	1956	186	363816	2007
7	SO6T	1167	1865	169	315185	2011
8	SP1NY	1150	1718	179	307522	2011
9	SN8F	1132	1791	162	290142	2011
10	SP2LNW	1098	1720	153	263160	2009
SO AB CW LP						
1	SN7Q	1290	2110	200	422000	2011
2	SP3VT	1128	1633	151	246583	2011
3	SN2N	946	1648	140	230720	2005
4	SP5CNA	989	1499	146	218854	2011
5	SP3VT	1075	1509	141	212769	2010
6	SP2ASJ	839	1330	153	203490	2007
7	SQ1DWR	969	1414	143	202202	2011
8	SP9BNM	898	1234	156	192504	2011
9	SP1AEN	949	1287	148	190476	2011
10	SP3HRN	829	1237	152	188024	2004
SO 160M PHONE						
1	SP3KEY	143	155	33	5115	2006
2	SP1GZF	151	163	31	5053	2009
3	SQ8JLA	151	155	32	4960	2008
4	SO8R	132	141	30	4230	2009
5	SP6CZ	130	138	30	4140	2005
6	SP5CJY	96	102	31	3162	2008
7	SP6CZ	104	116	27	3132	2004
8	SP1GZF	94	102	28	2856	2008
9	SO8R	91	101	27	2727	2011
10	SP3IBS	109	97	27	2619	1999
SO 80M PHONE						
1	SN3A	409	667	47	31349	2009
2	SP9CXX	445	537	44	23628	1997
3	SP7VCK	409	521	44	22924	1997
4	SP9CXX	351	427	48	20496	1998
5	SO80J	312	384	43	16512	2010
6	SO8R	332	386	41	15826	2010
7	SO2I	304	351	44	15444	2010
8	SP6ITF	322	346	44	15224	2008
9	SP3KFH	278	307	46	14122	2006
10	SP6ITF	291	327	38	12426	2009
SO 40M PHONE						
1	SO9R	616	944	61	57584	2009
2	SP3LPG	599	887	57	50559	2009
3	SN3S	514	668	59	39412	2011
4	SQ4MP	580	675	54	36450	2010
5	SO9R	476	585	58	33930	2008
6	SP4XQN	547	614	52	31928	2010
7	SP6IXF	483	568	55	31240	1997
8	SN6O	460	548	53	29044	2009
9	SN3S	431	553	50	27650	2010
10	SP9ODY	428	520	50	26000	2009

SO 20M PHONE						
1	SP3GEM	455	1126	54	60804	1997
2	SP7VC	608	962	57	54834	1999
3	SP9HWN	478	888	57	50616	1999
4	SP4XQN	409	802	55	44110	2006
5	SP9QMP	387	839	51	42789	2005
6	SP8BHW	n/d*	605	70	42350	2000
7	SP9LJD	344	601	57	34257	2003
8	SP4XQN	411	752	43	32336	2011
9	SP2FUD	356	704	45	31680	2011
10	SP9ODY	399	673	44	29612	2011
SO 15M PHONE						
1	SP3GEM	807	1198	60	71880	2002
2	SP3NGB	586	1637	38	62206	2001
3	SP9UON	644	1752	35	61320	2001
4	SP9ODY	n/d*	1336	41	54776	2000
5	SP8LBK	537	1483	35	51905	2001
6	SP9MRO/8	506	820	54	44280	2002
7	SP9ODY	411	1165	38	44270	2001
8	SP3CIW	415	833	45	37485	2002
9	SP2ESG	254	655	41	26855	2002
10	SP9RCL	272	741	36	26676	2001
SO 10M PHONE						
1	SQ8HPW	n/d*	553	37	20461	2000
2	SP3EPK	355	726	24	17424	2002
3	SP6TGD	233	556	28	15568	2002
4	SP7FBQ	155	378	27	10206	2002
5	SP9RCL	n/d*	399	22	8778	2000
6	SP6IXF	107	213	36	7668	2001
7	SP5LKM	160	328	20	6560	2002
8	SP9BQJ	n/d*	313	18	5634	2000
9	SQ4HRN	120	302	18	5436	2002
10	SQ9HYR	97	272	19	5168	2002
SO 160M CW						
1	SP7JQQ	226	318	35	11130	2009
2	SN9Z	228	263	38	9994	2008
3	SN2M	224	252	34	8568	2008
4	SP6AEG	203	259	33	8547	2009
5	SN9Z	183	234	33	7722	2009
6	SP7JQQ	189	223	34	7582	2011
7	SP6AEG	181	201	34	6834	2006
8	SP6AEG	189	213	32	6816	2008
9	SN9Z	168	198	33	6534	2011
10	SN2F	180	202	32	6464	2008
SO 80M CW						
1	SP3OCC	589	725	52	37700	2008
2	SP7JQQ	528	658	49	32242	2008
3	SP1NY	516	618	50	30900	2008
4	SP1NY	516	697	44	30668	2009
5	SP3VT	441	576	53	30528	2006
6	SN8F	410	567	49	27783	2004
7	SP4JCP	444	553	50	27650	2006
8	SP7JQQ	430	600	44	26400	2007
9	SP7HKK	461	647	40	25880	2009
10	SN2M	439	528	49	25872	2006
SO 40M CW						
1	SP5ELA	778	1244	58	72152	2009
2	SP6YAQ	750	1053	67	70551	2008
3	SP4TKR	731	1099	57	62643	2009
4	SN8R	735	1011	61	61671	2008
5	SN3X	681	1104	54	59616	2009
6	SP4TKR	693	880	64	56320	2008
7	SP2HMT	728	1017	55	55935	2010
8	SN3X	619	960	58	55680	2010
9	SP2QG	665	1039	53	55067	2009
10	SP4TKR	633	914	60	54840	2006
SO 20M CW						
1	SP7GIQ	673	1649	59	97291	1997
2	SP6XRZ	568	1242	55	68310	1998
3	SP4INT	473	1098	59	64782	2009
4	SP4INT	523	1069	60	64140	2010

5	SP4INT	582	1048	59	61832	2011	2	SP4BEU	179	471	29	13659	2002
6	SP1NQN	480	1001	59	59059	2010	3	SP3PL	181	428	28	11984	2002
7	SP4INT	470	982	58	56956	2006	4	SP6EVX	n/d*	341	35	11935	2000
8	SN4JWR	n/d*	999	57	56943	2000	5	SP7ELQ	181	462	25	11550	2002
9	SP1NQN	452	1034	55	56870	2009	6	SP6CIK	163	435	26	11310	2002
10	SP5JTF	496	912	62	56544	2003	7	SP3LWP	147	409	26	10634	2002
SO 15M CW							8	SP8GEY	139	355	24	8520	2002
1	SP5GRM	562	1003	51	51153	2002	9	SP9FZC	110	314	24	7536	2002
2	SP2EBG	447	971	47	45637	2002	10	SP7ASZ	109	312	24	7488	2002
3	SP5DDJ	395	919	49	45031	2002	SWL MIXED						
4	SQ2EAK	353	873	48	41904	2001	1	SP3 1058	376	582	119	69258	2002
5	SP5GRM	402	906	41	37146	1999	2	SP7-003-24	295	559	116	64844	2006
6	SP7DQR	n/d*	690	42	28980	2000	3	SP-0142-JG	285	440	134	58960	2011
7	SP1NQN	283	756	37	27972	1998	4	SP9-4961KA	315	619	94	58186	2002
8	SP5DIR	245	580	45	26100	2011	5	SP7-003-24	280	499	115	57385	2008
9	SP1NQN	244	564	46	25944	2011	6	SP3003-LG	327	506	111	56166	2001
10	SP7ELQ	260	701	35	24535	1998	7	SP5-25-0720	283	452	111	50172	2002
SO 10M CW							8	SP3-1058	308	420	110	46200	2003
1	SQ2EAK	n/d*	391	45	17595	2000	9	SP3-1058	340	434	99	42966	2006
							10	SP3-1058	n/d*	379	103	39037	2000

SP DX Contest - Rules

(translition: K1CC and SO5GB)

1. **Organizers:** PZK - Polish Amateur Radio Union (Polski Związek Krótkofalowców) and the SP DX Club.
2. **Date:** The first weekend of April - from 15:00 UTC Saturday to 15:00 UTC Sunday.
3. **Bands:** 160, 80, 40, 20, 15, 10m according to the IARU Contest Band Plan.
4. **Modes:** PHONE and CW. Contacts on PHONE and CW with the same station in the MIXED category are counted as separate contacts. Cross-mode contacts (i.e. PHONE/CW) are not allowed.
5. **Calling practice in the contest:**
 - Polish stations: "CQ CONTEST" on PHONE, or "CQ TEST" on CW.
 - Foreign stations: "CQ SP".
6. **Number exchange:**
 - Polish stations send a three or four character report consisting of a signal report (RS or RST) plus the letter of a voivodeship. Voivodeship abbreviations are: B, C, D, F, G, J, K, L, M, O, P, R, S, U, W, Z.
 - Foreign stations send a five or six character report consisting of a signal report (RS or RST) plus a three digit contest contact number beginning with 001 (for example 59001 on phone or 599001 on CW).
7. **Points:**
 - For Polish stations:
 - A QSO with a DX station (outside Europe): 3 points
 - A QSO with a station in Europe: 1 point
 - Contacts with other Polish stations do not count
 - For foreign stations: 3 points for every contact with a Polish station
8. **Multiplier:**
 - For Polish stations: countries on the current DXCC list (except SP) contacted on each band, regardless of mode.
 - For foreign stations: voivodeships in Poland contacted on each band, regardless of mode, for a maximum of 96 (16 voivodeships x 6 bands).
9. **Scoring:** The total QSO points on all bands multiplied by the total multipliers on all bands.
10. **Categories:**
 - A. MOAB MIXED
 - B. SOAB MIXED HP
 - C. SOAB MIXED LP
 - D. SOAB MIXED QRP
 - E. SOTB MIXED
 - F. SOAB PHONE HP
 - G. SOAB PHONE LP
 - H. SOSB PHONE
 - I. SOAB CW HP
 - J. SOAB CW LP
 - K. SOSB CW
 - L. SWL MIXED

Definition of categories and abbreviations used:

- MO: Multi-operator Single Transmitter means that only one signal may be transmitted at any given time, and the number of band changes or mode changes is limited to 12 in one clock hour.
- SO: Single Operator means that all contest activities, station operating, logging and scorekeeping are performed by one person. In addition, only one signal may be transmitted at any given time, and the number of band changes or mode changes is limited to 12 in one clock hour.
- SOTB (NEW): Single Operator Three Band - SO on any three chosen bands.
- HP: High Power - High Power - the maximum output power allowed by your license class
- LP: the maximum output power is 100 watts.
- QRP: the maximum output power is 5 watts.
- AB: All Bands.
- SB: Single Band.
- MIXED: Mixed Mode.

Every participant must declare their entry in one category only, any remaining QSO's will be used as check logs

11. Short Wave Listeners (SWL):

- Polish SWL's must log the callsign, signal report and exchange sent by a foreign station, as well as the callsign of the Polish station.
- Foreign SWL's must log the callsign and exchange sent by the Polish station, as well as the callsign of the foreign station

Points, multiplier and scoring is the same as for transmitting stations. Both Polish stations and foreign stations can only be logged once per band and mode, except if one of the stations is a new multiplier.

12. **Contest results:** The final results for foreign stations will be listed by country for all countries participating in the contest by category. In the QRP category for foreign stations, the results will be listed by continent. For Polish stations, the results will be listed by category. There will be a separate listing of top scores in all categories.< BR>

13. **Awards:** The top scores in each category will be awarded certificates, the number of which will be decided by the Contest Committee, depending on the number of participants in each category as well as the scores of the leading participants. First-place winners in each category, continent and country may receive special plaques or other awards sponsored by individuals and groups. It is also expected that there will be special awards in categories designated by their sponsors.

14. Contest logs:

- Electronic logs in the Cabrillo format should be sent to: <spdx-logs@pzk.org.pl>

The Cabrillo log should be attached as a file, with your callsign in the "Subject:" line of the e-mail.

- Written logs should be sent to:
Polski Związek Krótkofalowcow,
SPDX Contest Committee,
P. O. Box 320,
00-950 WARSZAWA,
POLAND

All entries must be submitted no later than April 30 of the year of the contest. Electronic logs sent in formats other than Cabrillo as well as printouts of computer logs may be used as check logs if they cannot be processed automatically.

15. **Disqualification:** Violation of amateur radio regulations in the country of the contestant or violation of the rules of the

contest, or unsportsmanlike conduct, will be deemed sufficient cause for disqualification.

16. **Disputes:** The decisions of the Contest Committee will be final.
17. **Polish prefixes are:** 3Z, HF, SN, SO, SP, SQ, SR

A map of Poland with borders of voivodeships (provinces):



- B = Lubuskie
- C = Łódzkie
- D = Dolnośląskie
- F = Pomorskie
- G = Śląskie
- J = Warmińsko-Mazurskie
- K = Podkarpackie
- L = Lubelskie
- M = Małopolskie
- O = Podlaskie
- P = Kujawsko-Pomorskie
- R = Mazowieckie
- S = Świętokrzyskie
- U = Opolskie
- W = Wielkopolskie
- Z = Zachodniopomorskie

SP DX Contest 2012

April 7 - 8